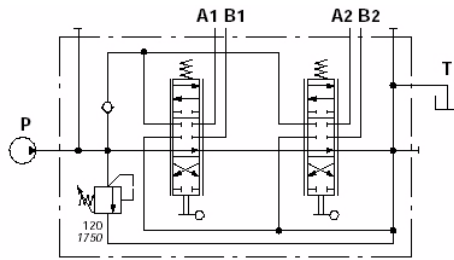


MONOBLOCK VALVES
SD5 Series

Simple, compact and heavy duty design.
1 to 7 sections.
For open and closed centre circuits.
Fitted with main pressure relief and load hold check.
Available in parallel, series or tandem circuit.
Optional high pressure carry over port.
16mm Ø interchangeable spools.
Available with solenoid and cable spool control.



The below models are fitted with cylinder spools, standard handles and are spring centred.

Part No.	No. Spools	Nom. Flow	Max. Pressure P,A,B	Max. Pressure on T	Ports (BSPP)	DIM A (mm)
		l/min	bar	bar		
SD5/1/18	1	45	315	25	3/8"	100.5
SD5/2/2X18	2					137.5
SD5/3/3X18	3	174.5				
SD5/4/4X18	4	211.5				
SD5/5/5X18	5	248.5				
SD5/6/6X18	6	285.5				
SD5/7/7X18	7	322.5				

OPTIONS		
Type	Part No.	Description
2,3,4,6,7		Spool options - please refer to page A 10
8	5V08105000	Spring Centre Kit (Standard)
9	5V09105010	Detent in pos.1 (port A) & Spring return from Pos.2 (port B)
10	5V10105010	Detent in pos.2 (port B) & Spring return from Pos.1 (port A)
11	5V11105000	Detent - 3 position
12	5V12105000	Detent - 2 position (1 & 2)
15	5V15105000	Detent - 2 position (0 & 1)
513	**SD5-513	4th Position Float
AE	3XGIU522460	Plug - High Pressure Carry Over
AEK	3XTAP522282	Plug - Closed Centre
AET	3XTAP623170	Plug - Open Centre (Standard)
PL	5V08105701	Pneumatic Control
LCN1-4	5CLO305100	Joystick (on 2 spools)
LCN2-3	5CLO305101	
8IM	5IDR205021	Hydraulic Pilot - Proportional 5-15 bar
8ES3	SD5/18ES3-12VDC	Solenoid Kit 12 Volt (2 sides without handle)
8ES3	SD5/18ES3-24VDC	Solenoid Kit 24 Volt (2 sides without handle)
8ES3LHC	SD5/18ES3LHC-12VDC	Solenoid + Handle Control Kit 12 VDC (2 sides)(includes type 1 spool)
8ES3LHC	SD5/18ES3LHC-24VDC	Solenoid + Handle Control Kit 24 VDC (2 sides)(includes type 1 spool)
8MG1/2/3	5V08105660	Microswitch - long life sealed unit(1 off req. per spool)
2RL	SD5/5ROT-2	Rotary Spool Kit - type 2 (motor) spool, also avail in type 1 (cyl)
		Cable Control - Please refer to page A 44

