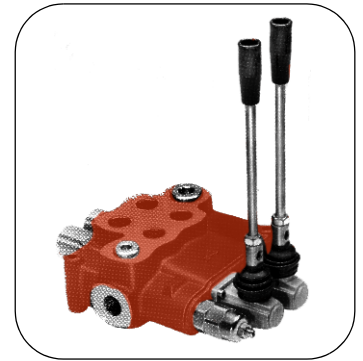


MONOBLOCK VALVES

# SD18 Series

Simple, compact and heavy duty design.  
 1 to 3 spools for open or closed centre applications.  
 Fitted with direct or pilot operated main pressure relief.  
 Available in parallel circuit only.  
 Optional high pressure carry over port.  
 25mm Ø interchangeable spools.  
 Available with manual, electro-hydraulic, pneumatic, hydraulic pilot and cable  
 spool control.



The below models are fitted with cylinder spools, standard handles and are spring centred.

Part No.	No. Spools	Nom. Flow	Max. Press. P,A,B	Max. Press. T	Ports (BSPP)		DIM A
		l/min	bar	bar	P,A,B	T	
SD18/1/18	1	150	250	25	3/4"	1"	161
SD18/2/2X18	2	140					212
SD18/3/3X18	3						265

OPTIONS		
Type	Part No.	Description
1,2,3,4,7		Spool Options - please refer to page A 10
11	5V11120000	Detent - 3 position
15	5V15120000	Detent - 2 position (0 & 1)
AE	3XGIU541600	Plug - High Pressure Carry Over
AEK	3XTAP540560	Plug - Closed Centre
PL	5V08120701	Pneumatic Control on/off
8IM	5IDR220000	Hydraulic Pilot - Proportional 6-26 bar (50 bar Max.)
		Cable Control - please refer to page A 44

