

SECTIONAL VALVES

SDS400 Series

400 Litre flow capacity

Simple, compact and heavy duty design - 1 to 12 sections

For open and closed centre circuit applications.

Fitted with main pressure relief and load check.

Available with:

Parallel or series circuit.

Optional carry-over port.

Port relief and anticavitation circuit valves.

30mm Ø interchangeable spools.

4th position float

Manual and proportional hydraulic pilot spool control.

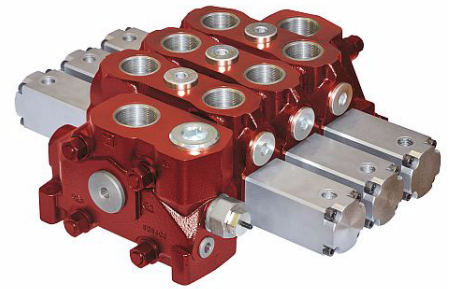


Image depicted with prop. hyd. pilot

Part No.	No of Spools	Nom Flow	M W P P,A,B parallel	M W P P,A,B series	Max Press T	Dim A	Leakage Per 100 BAR	Tie Bolt Torque	Ports BSPP	
		L/Min	BAR	BAR	BAR	mm			P&T	A&B
SDS400/1/AC/18/RC	1	400	315	210	25	274	25	130	1-1/2"	1-1/4"
SDS400/2/AC/2X18/RC	2					348				
SDS400/3/AC/3X18/RC	3					422				
SDS400/4/AC/4X18/RC	4					496				
SDS400/5/AC/5X18/RC	5					570				
SDS400/6/AC/6X18/RC	6					644				

The above models complete with cylinder spools & spring centred. Standard handles included in price.

Options		
Type	Part No.	Description
1,2,3,4		Spool Options - refer to page A 22
8	5V0810B000	Spring centre kit
11	5V1110B000	Detent 3 Position
C	X33132A000	Anticavitation Valve
P1,P2	X33121B150	Port Relief (50-220 bar - std setting 150 bar)
P1,P2	X33121B250	Port Relief (150-350 bar - std setting 250 bar)
U1,U2	X331421160	Port Relief & Anti Cav. (50-350bar-std setting 160 bar)
P3T	XTAP540110	Port Relief Blanking Plug
8IM	5IDR20B300	Proportional Hydraulic Pilot Control c/w Spring Centre for each end
CS1	SDS400/CS1-FS3-M	Mid Outlet
RE	3TAP640251	High Pressure Carryover Plug
SLP	5COP140000	Dust Proof Plate & Seal

