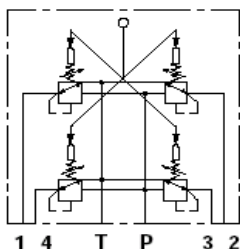


HYDRAULIC PILOT VALVES SVM400 Series

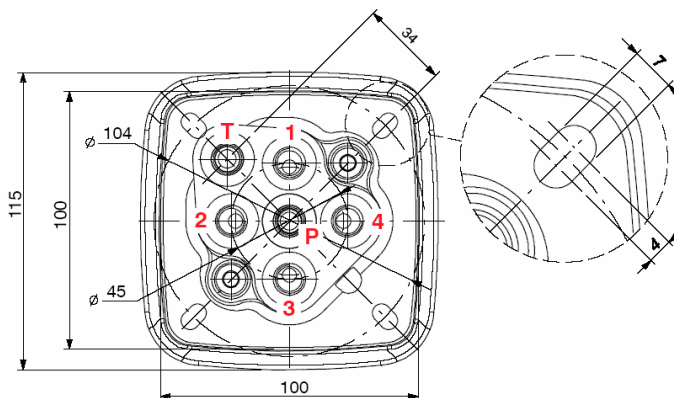
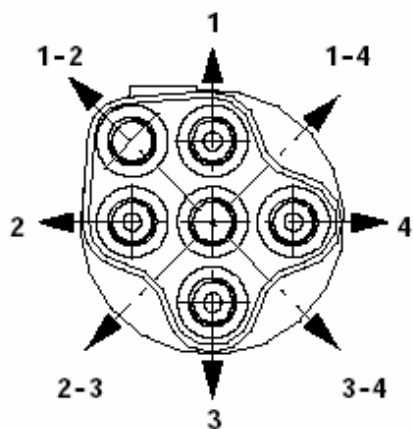
Monoblock Dual Axis Joystick Hydraulic Pilot Valve with 1 lever and 4 work ports for simultaneous operation of 2 valve sections. This unit can be arranged with several types of handles with or without electric controls. This is a new version with reduced weight and dimensions.
Body in Aluminium



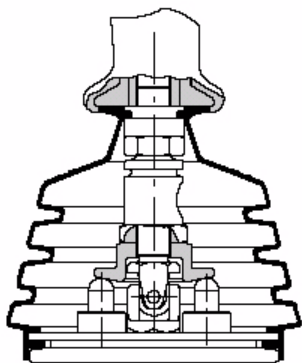
Part No.	MIN Flow	MAX Flow	Max Press on 'P' BAR	Max Back Press on 'T' BAR
	L/MIN	L/MIN		
SVM400/01B/01V009M001	5	20	100	3

The above unit is fitted with spring Curve Kit '001A' = 5.8 to 22 BAR

Movements

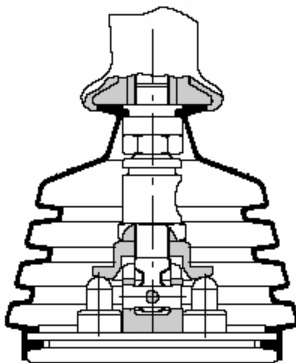


TYPE - 01



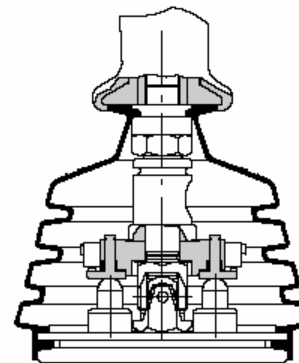
Spring return in neutral position.

TYPE - 09



Cross movement selector.

TYPE - 16



Movement detection on each port.