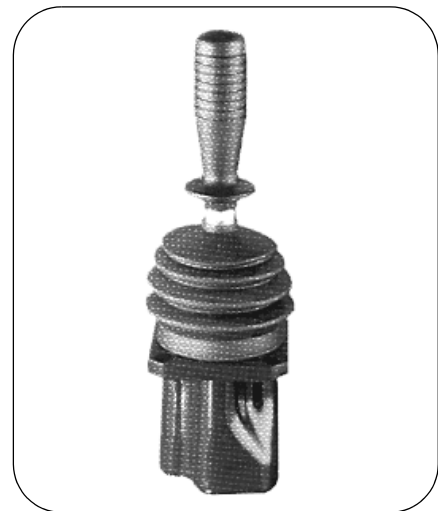
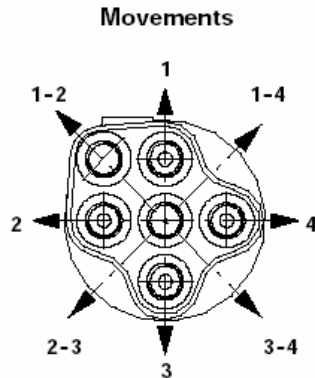
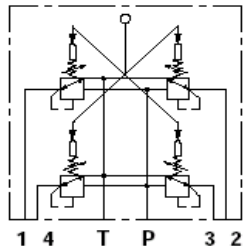


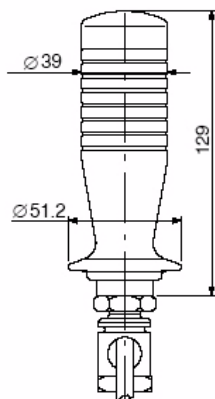
# SV01 Series

Monoblock Dual Axis Joystick Hydraulic Pilot Valve with 1 lever and 4 work ports for simultaneous operation of 2 valve sections. This unit can be arranged with several types of handles with or without electric controls. Body in cast iron



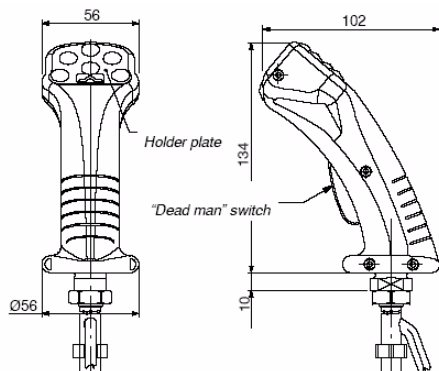
Part No.	MIN Flow	MAX Flow	Max Press on 'P' BAR	Max Back Press on 'T' BAR
	L/MIN	L/MIN		
<b>SV01-B/01W-001AX4</b>	5	20	100	3

The above unit is fitted with spring Curve Kit '001A' = 5.8 to 22 BAR  
Please refer to Page A58 for other available Spring Curve Kits.



## Series 10 - optional handles

- W: Without switches
- X: With upper spring return push-button
- Z: With upper detent push-button
- Y: With 3 position spring return rocker switch
- K: With upper protected spring return push-button
- T: With 3 position detent rocker switch



## Series 40 - optional handles

- H: Fitted with up to 8 microswitch push-buttons, with rocker switch and "dead man" switch.
- HW: Fitted with up to 4 push-buttons (400mA types), with "dead man" switch.
- HT: Fitted with up to 4 push-buttons (5A types), with rocker switch, "dead man" switch and ON/OFF switch.
- HZ: With potentiometer, fitted with up to 2 microswitch push-buttons, "dead man" and ON/OFF switch.