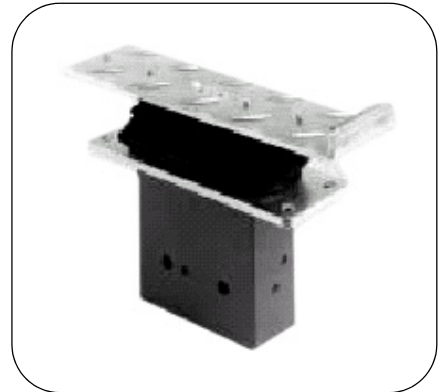


HYDRAULIC PILOT VALVES

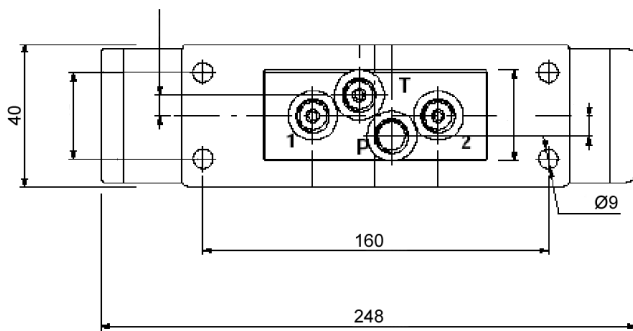
SVP500 Series

Monoblock Hydraulic Pilot Valve with Rocker, Foot Pedal and 2 work ports.

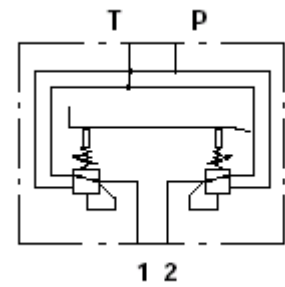


Part No.	Min Flow	Max. Flow	Rocker Pedal	Max Press on 'P' BAR	Controlled Press on 'P'	Max Back Press on 'T'
	L/MIN	L/MIN			BAR	BAR
SVP500-B/01-P051BX2	5	15	Flat	100	64	3
SVP510-B/01-P051BX2			Angled			

The above unit is fitted with spring Curve Kit P051B = 5 to 21 BAR.



SVP500



SVP510
Monoblock angled rocker pedal

