

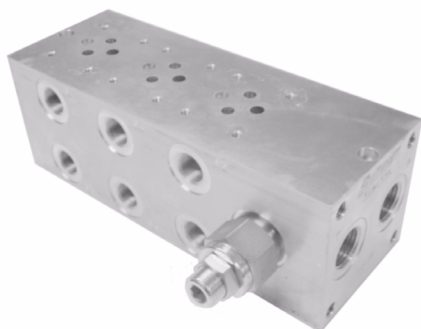
CETOP 3 MANIFOLDS

Without Relief Valve



Part No.	Ports BSPP		STATIONS	CIRCUIT TYPE
	P & T	A & B		
SMC3P1A	1/2"	3/8"	1	PARALLEL
SMC3P2A			2	
SMC3P3A			3	
SMC3P4A			4	
SMC3P5A			5	
SMC3P6A			6	
SMC3P7A			7	
SMC3P8A			8	
SMC3S2A	1/2"	3/8"	2	SERIES
SMC3S3A			3	
SMC3S4A			4	

With Relief Valve



Part No.	Ports BSPP		STATIONS	CIRCUIT TYPE
	P & T	A & B		
SMC3P1A-R	1/2"	3/8"	1	PARALLEL
SMC3P2A-R			2	
SMC3P3A-R			3	
SMC3P4A-R			4	
SMC3P5A-R			5	
SMC3P6A-R			6	
SMC3P7A-R			7	
SMC3P8A-R			8	

Single Station



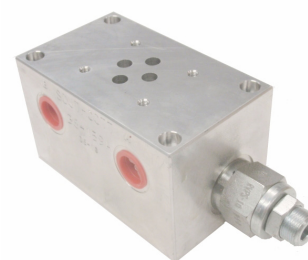
BA-202
M02-03-B-PP-202-SG



S4224
S4224S
S4225



SMC3P1A-R-TT08
Tank Top c/w Relief
nom flow = 20L/Min



SMC3P1A-R-TT10-30
Tank Top c/w Relief
NOM FLOW = 30L/Min

Part No.	Brand	Port Position	PORTS BSPP	PRESS RANGE BAR	Material
BA-202	Atos	REAR	3/8"	350	Cast Iron
M02-03-B-PP-202-SG	Maxma	REAR	3/8"	350	Cast Iron
S4224	Southcott	SIDE	3/8"	205	Aluminium
S4224S	Southcott	SIDE	3/8"	350	Steel
S4225	Southcott	REAR	1/4"	205	Aluminium
SMC3P1A-R-TT08-15	Southcott	SIDE & REAR	3/8"	103	Aluminium
SMC3P1A-R-TT08-30	Southcott	SIDE & REAR	3/8"	205	Aluminium
SMC3P1A-R-TT10-15	Southcott	SIDE & REAR	3/8"	103	Aluminium
SMC3P1A-R-TT10-30	Southcott	SIDE & REAR	3/8"	205	Aluminium
PA03.001	Southcott	Blanking Plate	-	-	Aluminium