

HYDRAULIC GEAR PUMPS

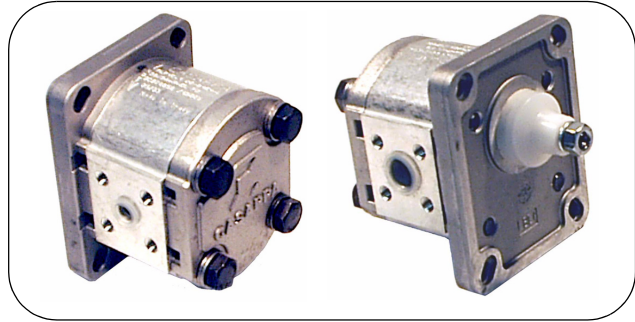
Polaris Series - Group 1

Mount : Euro-Mount

Shaft : 1 in 8 Standard Duty Taper

Ports : Port adaptor

PLP10 - Group 1 Euro-Mount



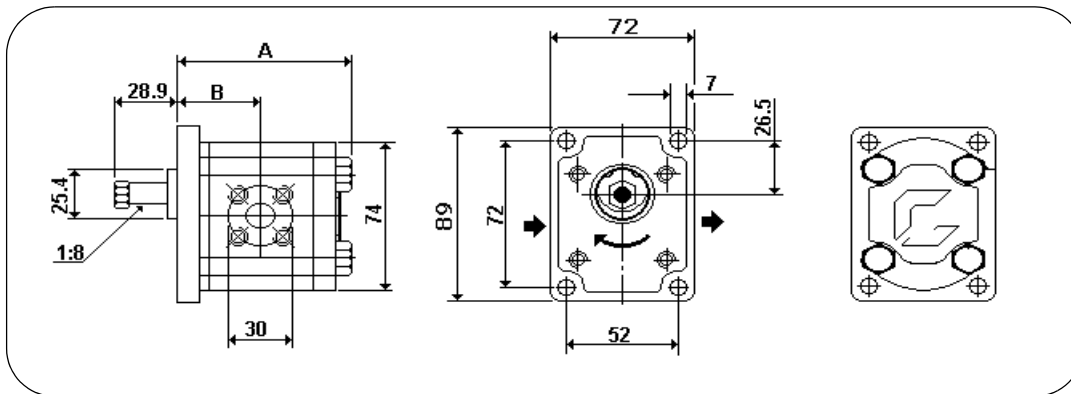
Part No.	DISP. CC/REV	MAX PRESSURE			MAX SHAFT SPEED	PORTS		DIM MM	
		P1	P2	P3		ADAPTOR			
		BAR				IN	OUT	A	B
PLP10-1D-81E1-BBBA	1.07	260	280	290	4000	1GQ12	1GQ12	65.7	31.6
PLP10-2D-81E1-BBBA	2.13							68.9	33.2
PLP10-3.15D-81E1-BBBA	3.34							72.5	35
PLP10-4D-81E1-BBBA	4.27	250	270	280				75.3	36.4
PLP10-5D-81E1-BBBA	5.34							78.5	38
PLP10-6.3D-81E1-BBBA	6.67							82.5	40
PLP10-8D-81E1-BBBA	8.51	180	200	210	3500			88	42.8
PLP10-10D-81E1-BBBA	10.67	140	160	170				94.5	46

p1 = continuous max. pressure p2 = intermittent max. pressure p3 = peak pressure

SERIES **PLP10-10 D- 81 E1 - BBBA**

DISPLACEMENT CODE

Rotation Code	Shaft Code	Mount Code	Port Code
D = Clockwise	81 = 1 in 8 Std Taper	E1 = Euro Mount	BB = IN PORT
S = Counterclockwise			BA = OUT PORT



Port Adaptors
Must be ordered separately

Part No.	Port
RB-012-30-M	1/2" BSPP

MULTIPLE PUMP PRICING
use the price of each single pump plus assembly kit.

Assembly Kit	Inter. Plate
**PLP10/10	88V6
**PLP10/10/10	88V6 + 88V6