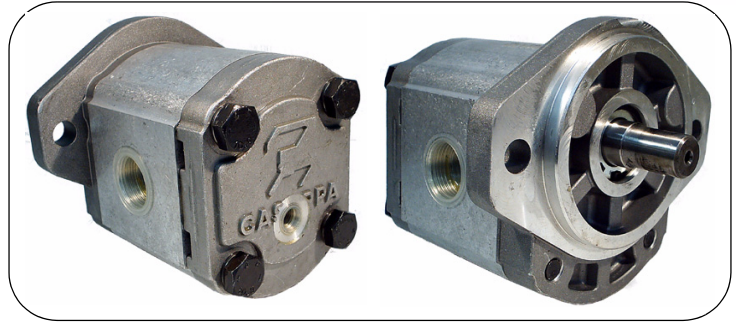


HYDRAULIC GEAR MOTORS

Polaris Series - Group 2
Mount Type:SAE "A" 2 BOLT MOUNT

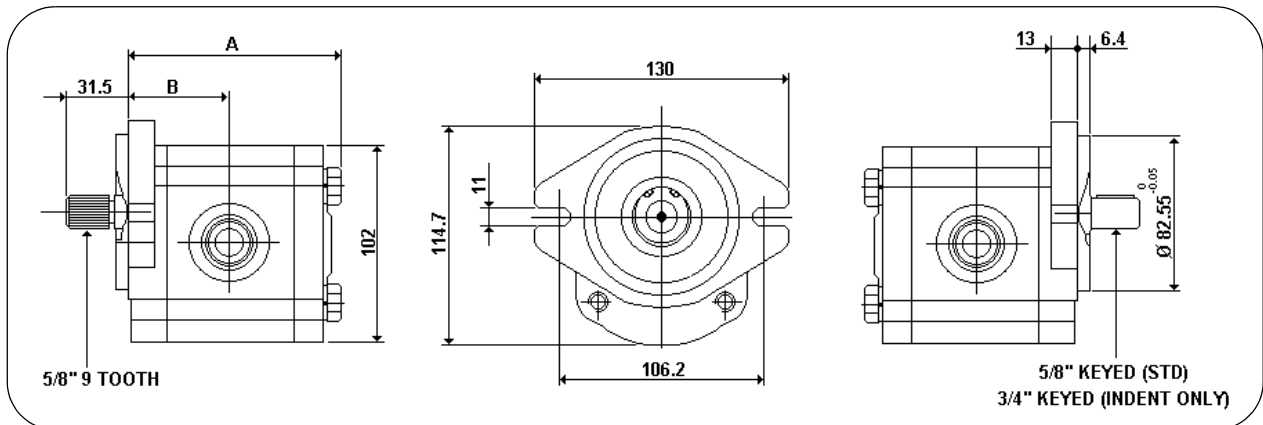
PLM20 - Group 2 SAE "A" 2 Bolt Mount



Part No.	DISP. CC/REV	MAX CONT PRESSURE	MAX SHAFT SPEED	PORTS BSPP		OUTPUT kW	TORQUE NM
		BAR		IN	OUT	AT 100 BAR AND 1000 RPM	
PLM20-4R-31S1-GDGD	4.95	213	4000	1/2" (GD)	1/2" (GD)	0.64	6.50
PLM20-6.3R-31S1-GDGD	6.61					0.87	8.80
PLM20-8R-31S1-GDGD	8.26					1.11	11.24
PLM20-9R-31S1-GDGD	9.17		3500			1.20	12.18
PLM20-11.2R-31S1-GDGD	11.23					1.49	15.03
PLM20-14R-31S1-GEGE	14.53					1.93	19.50
PLM20-16R-31S1-GEGE	16.85	170	3000	3/4" (GE)	3/4" (GE)	2.22	22.48
PLM20-20R-31S1-GEGE	21.14					3.48	28.16
PLM20-25R-31S1-GEGD	26.42					4.37	35.20
PLM20-31.5R-31S1-GEGD	33.03	111	2500			5.48	44.14

SERIES **PLM20-16 R- 31 S1 - GEGD**
DISPLACEMENT CODE

Rotation Code	Shaft Code	Mount Code	Port Code
D = Clockwise	03 = 5/8" 9 Tooth 31 = 5/8" Keyed 07 = 3/4" 11 Tooth 49 = 3/4" Keyed	S1 = SAE"A" 2 BOLT	GD = 1/2" BSPP GE = 3/4" BSPP
S = Counterclockwise			
R = Reversing			



The above pressure ratings are for reversible motors.

NB: A drain line to tank must be run for reversible motors. For input flow allow volumetric efficiency of 90%. Output kW figures allow for overall efficiency of 82%. Output torque figures allow for mechanical efficiency of 85%.