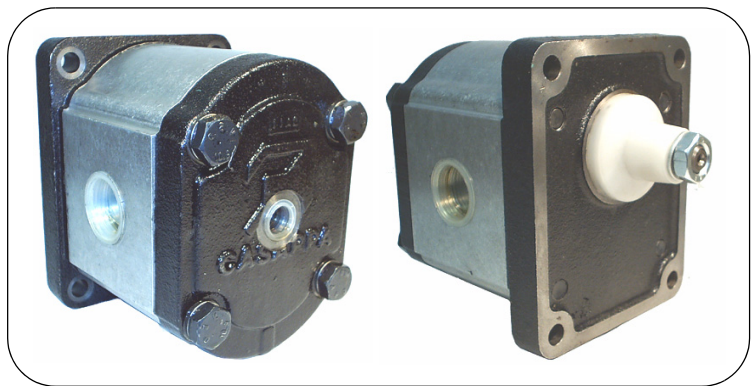


HYDRAULIC GEAR MOTORS

Polaris Series - Group 3
Mount Type:EUROMOUNT SERIES "83E3"

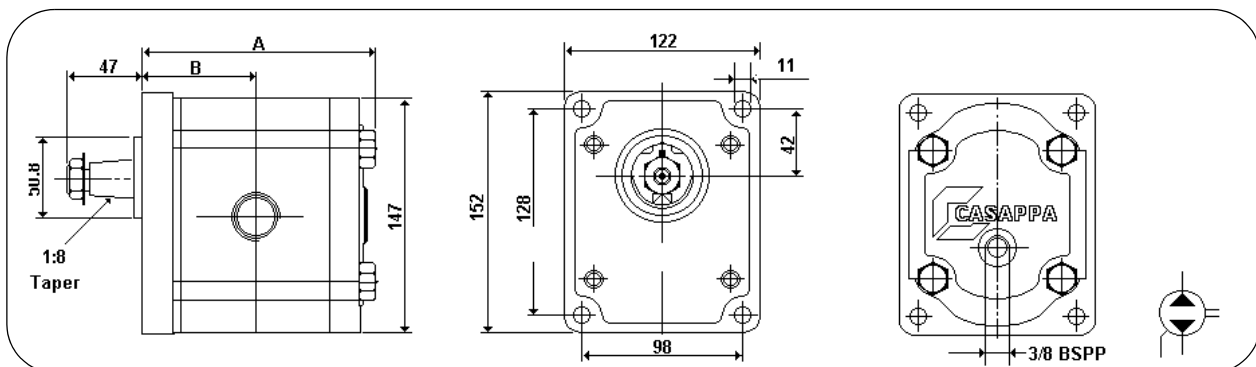
PLM30 - Group 3 EURO Mount "83E3"



Part No.	DISP. CC/REV	MAX CONT PRESSURE	MAX SHAFT SPEED	PORTS		OUTPUT kW	TORQUE NM
		BAR		IN	OUT	AT 100 BAR AND 1000 RPM	
PLM30-22R-83E3-GFGF	21.99	213	3000	1" (GF)	1" (GF)	2.93	29.64
PLM30-27R-83E3-GFGF	26.70					3.56	36
PLM30-34R-83E3-GFGF	34.55	204				4.61	46.56
PLM30-38R-83E3-GFGF	39.27					5.14	52.17
PLM30-43R-83E3-GFGF	43.98					5.87	59.26
PLM30-51R-83E3-GFGF	51.83	179	2500	1-1/4" (GG)	1" (GF)	6.91	69.45
PLM30-61R-83E3-GFGF	61.26	162				8.17	82.55

SERIES **PLM30-43 R- 83 E3 - GFGF**
DISPLACEMENT CODE

Rotation Code	Shaft Code	Mount Code	Port Code
D = Clockwise	83 = Taper	E3 = EURO MOUNT	GF = 1" BSPP GG = 1 1/4" BSPP
S = Counterclockwise			
R = Reversing			



The above pressure ratings are for reversible motors

NB: A drain line to tank must be run for reversible motors. For input flow allow volumetric efficiency of 90%. Output kW figures allow for overall efficiency of 82%. Output torque figures allow for mechanical efficiency of 85%.