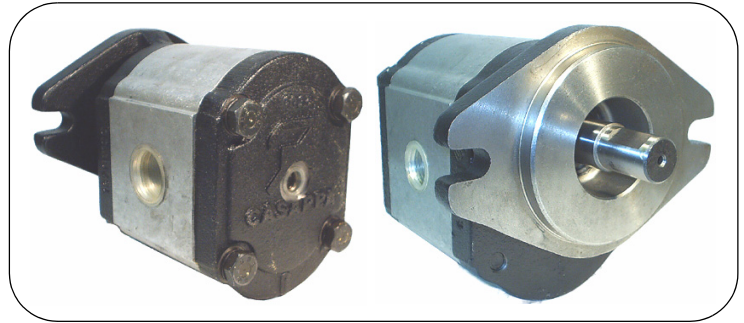


## HYDRAULIC GEAR MOTORS

Polaris Series - Group 3  
Mount Type: SAE "B" 2 BOLT MOUNT

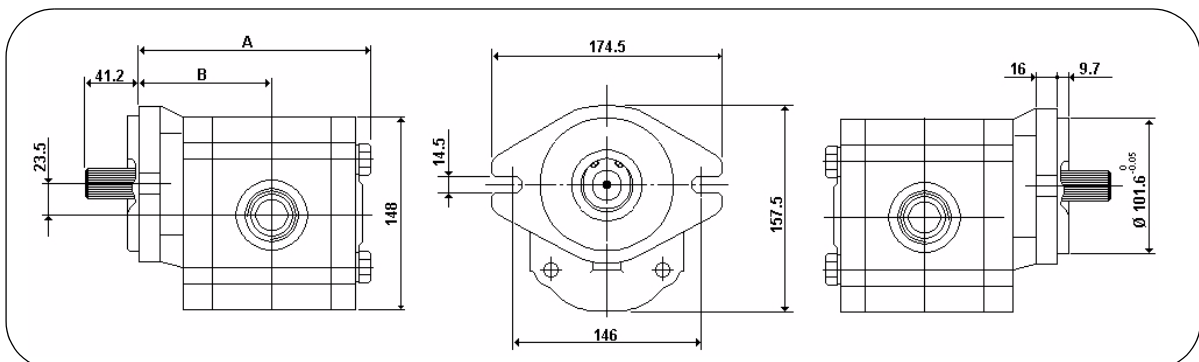
### PLM30 - Group 3 SAE "B" 2 Bolt Mount



Part No.	DISP. CC/REV	MAX CONT PRESSURE	MAX SHAFT SPEED	PORTS		OUTPUT kW	TORQUE NM
		BAR		IN	OUT	AT 100 BAR AND 1000 RPM	
PLM30-22R-04S5-GFGF	21.99	213	3000	1" GF	1" GF	2.93	29.64
PLM30-27R-04S5-GFGF	26.70					3.56	36
PLM30-34R-04S5-GFGF	34.55	204				4.61	46.56
PLM30-38R-04S5-GFGF	39.27					5.14	52.17
PLM30-43R-04S5-GFGF	43.98	196	2500	1-1/4" GG	1" GF	5.87	59.26
PLM30-51R-04S5-GFGF	51.83	179				6.91	69.45
PLM30-61R-04S5-GFGF	61.26	162				8.17	82.55

SERIES  
DISPLACEMENT CODE  
**PLM30-43 R- 04S5 - GFGF**

Rotation Code	Shaft Code	Mount Code	Port Code
D = Clockwise	04 = 7/8" 13 Tooth 05 = 1" 15 tooth 32 = 7/8" Keyed 33 = 1" Keyed	S5 = SAE "B" 2 BOLT	GF = 1" BSPP GG = 1 1/4" BSPP
S = Counterclockwise			
R = Reversing			



The above pressure ratings are for reversible motors.

**NB: A drain line to tank must be run for reversible motors.** For input flow allow volumetric efficiency of 90%. Output kW figures allow for overall efficiency of 82%. Output torque figures allow for mechanical efficiency of 85%.