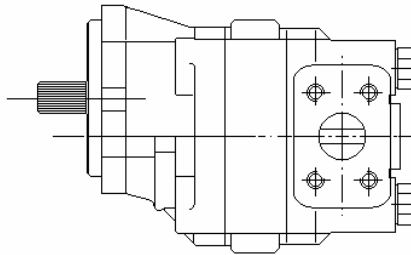
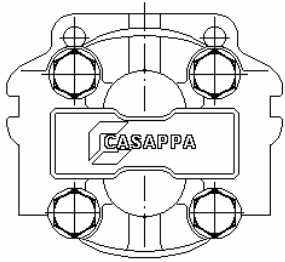


HD MAGNUM[®]

HDM30 GEAR MOTORS



Part No.	Displacement cm ³ /rev	MAX PRESSURE		RPM		Output kW	Torque NM
		P1 BAR	Max	Min	at 100 BAR and 1000 RPM		
HDM30-17R2-04S3-ODOD	17.20	238	3000	400	2.2	21	
HDM30-22R2-04S3-ODOD	21.89				2.7	26	
HDM30-24R1-04S3-ODOD	24.03				2.9	28	
HDM30-27R1-04S3-ODOD	26.58				3.2	31	
HDM30-34R1-04S3-ODOD	34.39	230	2500	300	4.4	42	
HDM30-38R1-04S3-ODOD	39.27				4.9	48	
HDM30-43R1-04S3-ODOD	43.77				5.4	52	
HDM30-51R1-04S3-ODOD	51.59	196	2000	250	6.8	65	
HDM30-56R1-04S3-ODOD	56.55	183			7.3	70	
HDM30-61R1-04S3-ODOD	60.97	170	1700		7.7	74	
HDM30-73R1-04S3-OFOF	73.47	161	1500		9.6	92	
HDM30-82R1-04S3-OFOF	81.29	144			11.0	105	

SERIES HDM30 - 17 R 2 - 04 S5 - ODOD

DISPLACEMENT CODE

Rotation Code	SHAFT TYPE	Shaft Code	Mount Code	Port Code
S = Counterclockwise D = Clockwise R = Reversible	1 = SOLID SHAFT 2 = STUB SHAFT	04 = 7/8" 13 Tooth 05 = 1" 15 Tooth 06 = 1 1/4" 14 Tooth 32 = 7/8" Keyed 33 = 1" Keyed 34 = 1 1/4" Keyed	S1 = SAE "A" 2 BOLT S3 = SAE "B" 2/4 BOLT S8 = SAE "C" 2/4 BOLT	OD = 1 1/16" Oring Boss OF = 1 5/16" Oring Boss

NB: Listed pressures are for reversible motors, for single rotation motors refer to pump figures

NB: Output kW and torque figures are for reversible motors.

NB: Drain ports must be connected to tank via a dedicated drain line