

Metaris MA10V Axial Piston Pumps

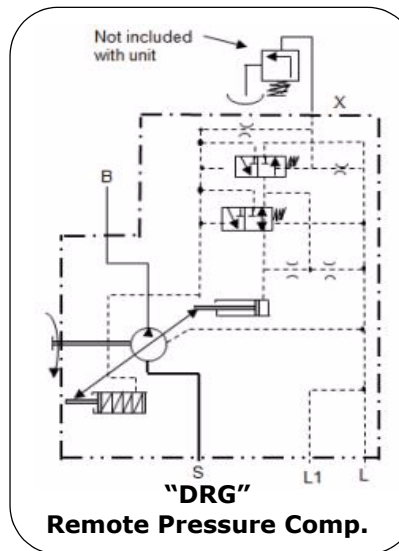
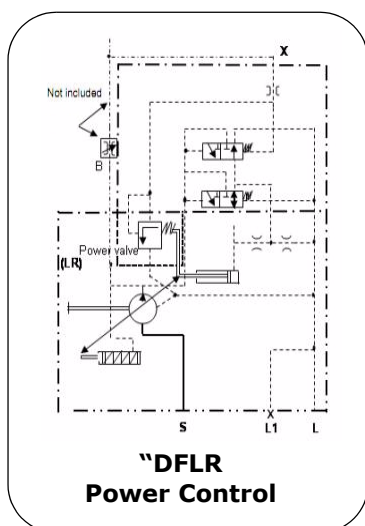
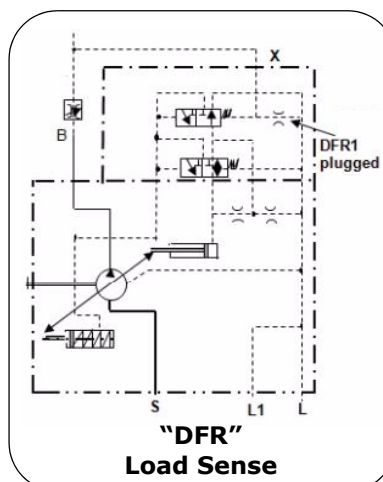
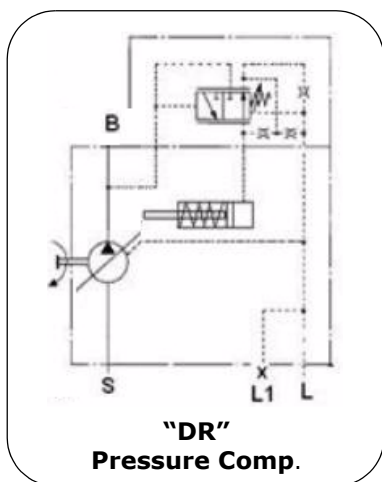
Axial piston pumps MA10V in swashplate design are used in open loop circuits. Flow is proportional to the drive speed and displacement. By adjusting the position of the swashplate it is possible to smoothly vary the output flow of the pump.



Disp.	Nom Press	Max Press	Max Speed*	In Port code 61	Out Port	Keyed Shaft	Splined light duty single	Splined light duty thru drive	Splined std duty single	Splined std duty thru drive
cc/rev	bar	bar	rpm	Flanged	Flanged	"K"	"U"	W	"S"	"R"
MA10V-18	280	350	3000	1"	3/4"C61	3/4"	5/8"	-	3/4"	3/4"
MA10V-28	280	350	3000	1-1/4"	3/4"C61	7/8"	-	-	7/8"	7/8"
MA10V-45	280	350	2600	1-1/2"	1"C61	1"	7/8"	7/8"	1"	1"
MA10V-71	280	350	2200	2"	1"C61	1-1/4"	-	-	1-1/4"	1-1/4"
MA10V-100	280	350	2000	2-1/2"	1-1/4"C62	1-1/2"	1-1/4"	1-1/4"	1-1/2"	-
MA10V-140	280	350	1800	2-1/2"	1-1/4"C62	1-3/4"	-	-	1-3/4"	-

*: Max. speed is applicable at 0 bar at the inlet port. Higher speed may be obtained at reduced swash plate angle or with higher inlet pressure. Max. Pump case pressure is 2 bar

Circuit Options



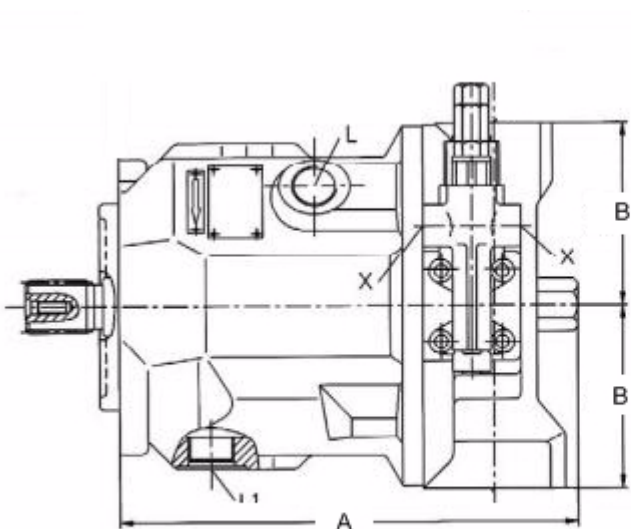
Part No.	Disp. cc/rev	Regulator	Shaft Size	Shaft Type	Input Mount	Aux. Mount
MA10V-18-DFR-R-K	18	Load Sense	3/4"keyed	K	SAE"A"2B	none
MA10V-18-DFR-R-U	18	Load Sense	5/8"9T	U	SAE"A"2B	none
MA10V-18-DFR-R-S	18	Load Sense	3/4"11T	S	SAE"A"2B	none
MA10V-18-DFR-R-S-K01	18	Load Sense	3/4"11T	S	SAE"A"2B	SAE"A"2
MA10V-28-DFR-R-K	28	Load Sense	7/8"keyed	K	SAE"B"2B	none
MA10V-28-DFR-R-S	28	Load Sense	7/8"13T	S	SAE"B"2B	none
MA10V-28-DFR-R-R-K01	28	Load Sense	7/8"13T	R	SAE"B"2B	SAE"A"2
MA10V-28-DFR-R-R-K02	28	Load Sense	7/8"13T	R	SAE"B"2B	SAE"B"2
MA10V-28-DFLR-R-S	28	Power Cntl	7/8"13T	S	SAE"B"2B	none
MA10V-45-DFR-R-K	45	Load Sense	1"keyed	K	SAE"B"2B	none
MA10V-45-DFR-R-S	45	Load Sense	1"15T	S	SAE"B"2B	none
MA10V-45-DFR-R-R-K01	45	Load Sense	1"15T	R	SAE"B"2B	SAE"A"2
MA10V-45-DFR-R-R-K02	45	Load Sense	1"15T	R	SAE"B"2B	SAE"B"2
MA10V-45-DFLR-R-S	45	Power Cntl	1"15T	S	SAE"B"2B	none
MA10V-71-DFR-R-K	71	Load Sense	1-1/4"keyed	K	SAE"C"2B	none
MA10V-71-DFR-R-S	71	Load Sense	1-1/4"14T	S	SAE"C"2B	none
MA10V-71-DFR-R-R-K01	71	Load Sense	1-1/4"14T	R	SAE"C"2B	SAE"A"2
MA10V-71-DFR-R-R-K02	71	Load Sense	1-1/4"14T	R	SAE"C"2B	SAE"B"2
MA10V-71-DFR-R-R-K07	71	Load Sense	1-1/4"14T	R	SAE"C"2B	SAE"C"2
MA10V-71-DFLR-R-S	71	Power Cntl	1-1/4"14T	S	SAE"C"2B	none
MA10V-100-DFR-R-K	100	Load Sense	1-1/2"keyed	K	SAE"C"2B	none
MA10V-100-DFR-R-U	100	Load Sense	1-1/4"14T	U	SAE"C"2B	none
MA10V-100-DFR-R-W-K01	100	Load Sense	1-1/4"14T	W	SAE"C"2B	SAE"A"2
MA10V-100-DFR-R-W-K02	100	Load Sense	1-1/4"14T	W	SAE"C"2B	SAE"B"2
MA10V-100-DFR-R-W-K07	100	Load Sense	1-1/4"14T	W	SAE"C"2B	SAE"C"2
MA10V-100-DFLR-R-S	100	Power Cntl	1-1/2"17T	S	SAE"C"2B	none
MA10V-140-DFR-R-K	140	Load Sense	1-3/4"keyed	K	SAE"D"4B	none
MA10V-140-DFR-R-S	140	Load Sense	1-3/4"13T	S	SAE"D"4B	none
MA10V-140-DFR-R-S-K01	140	Load Sense	1-3/4"13T	S	SAE"D"4B	SAE"A"2
MA10V-140-DFR-R-S-K02	140	Load Sense	1-3/4"13T	S	SAE"D"4B	SAE"B"2
MA10V-140-DFR-R-S-K07	140	Load Sense	1-3/4"13T	S	SAE"D"4B	SAE"C"2

The range above defines CW rotation, for CCW rotation replace -R- with -L-.

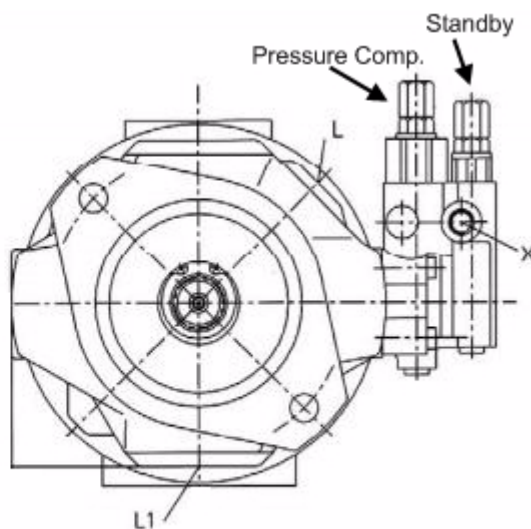
The Metaris single pumps come with a maximum displacement adjustment as standard.

NB: To convert a DFR load sense pump to DR Pressure Compensated function, screw the standby adjustment screw all the way in and plug the LS port "X". The "DRG" version requires an alternative compensator head.

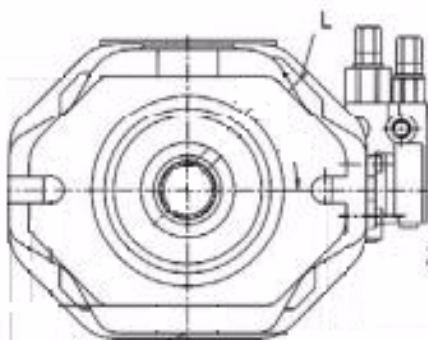
The Metaris range of pumps includes but is not limited to the above options. Please contact your Southcott Representative for further possibilities.



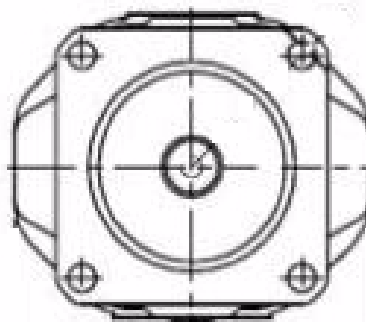
Overall Dimensions
Sizes 18 to 140 cc/rev



Mount Orientation
Sizes 18 to 71 cc/rev



Mount Orientation
Size 100 cc/rev



Mount Orientation
Size 140 cc/rev

Size	A	B	L/L1	X
18	195	63	M16x1.5	7/16"uno
28	203.5	80	M18x1.5	7/16"uno
45	225	90	M22x1.5	7/16"uno
71	258	104	M22x1.5	7/16"uno
100	332.5	100	M27x2	7/16"uno
140	335	110	M27x2	9/16"uno