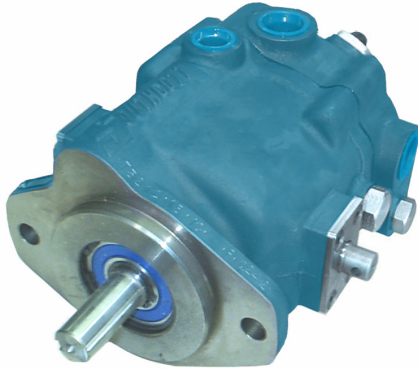




Southcott Axial Piston Pumps & Motors



Transmission Pumps - Closed Loop

Series 22 and 33

Developed to meet the modern requirements of high pressures and speeds in hydrostatic transmissions for off-road vehicles, the Southcott 22 and 33 series pumps provide lightweight and compact primary units for applications to 22kW. input, at speeds up to 3000 rpm.

The 22 and 33 Series are axial piston units of the variable delivery, over-centre type and are designed as composite pump packages for application in closed circuit with all types of hydraulic motors.

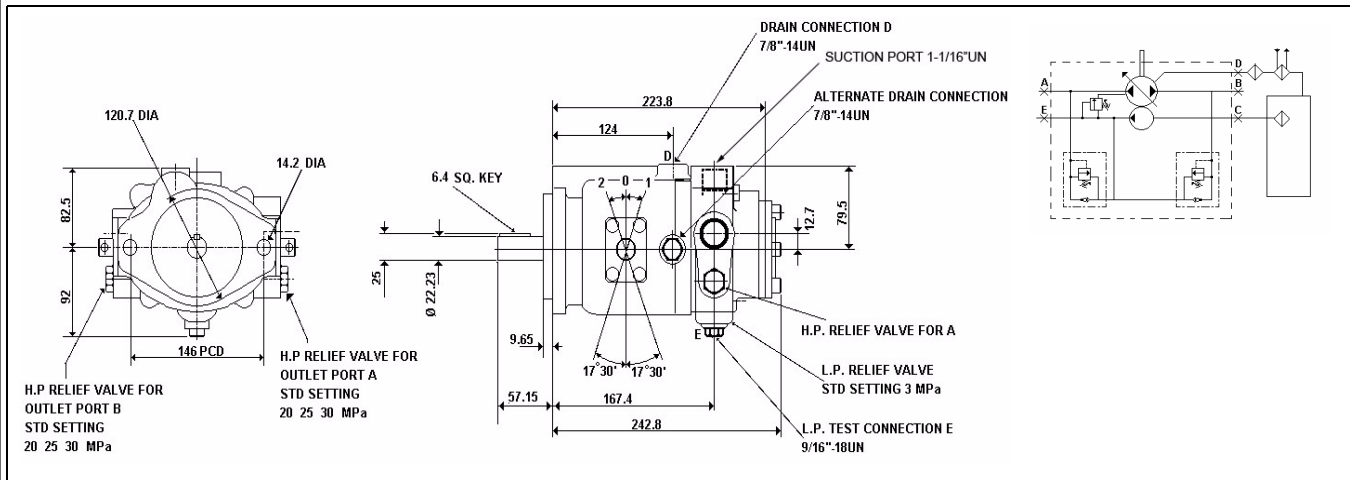
The pumps incorporate a charging pump, check valves and a low pressure relief valve for closed circuit replenishment and system cooling. Two differential piston type high pressure relief valves are also provided for operating pressure limitation on each side of the circuit.

The pumps are intended for direct coupling to prime movers and are furnished with a two bolt flange mounting to SAE 'B' standard. Plain keyed or splined shafts are optional.

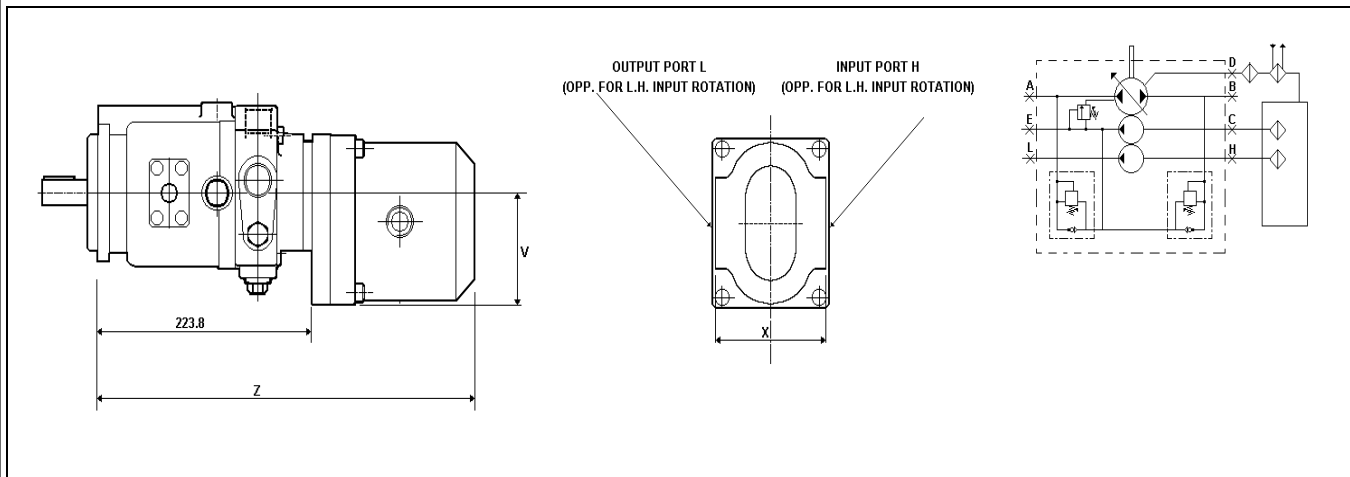
PERFORMANCE DATA						
SERIES	DISP CC/REV	CONT. PRESS BAR	INT. PRESS BAR	MAX SPEED RPM	MAX. CASE PRESS BAR	WEIGHT Kg
22	22	200	300	3000	3	19
33	33	200	300	3000	3	19

NB: models, Codes and Specifications may be subject to change without notice.

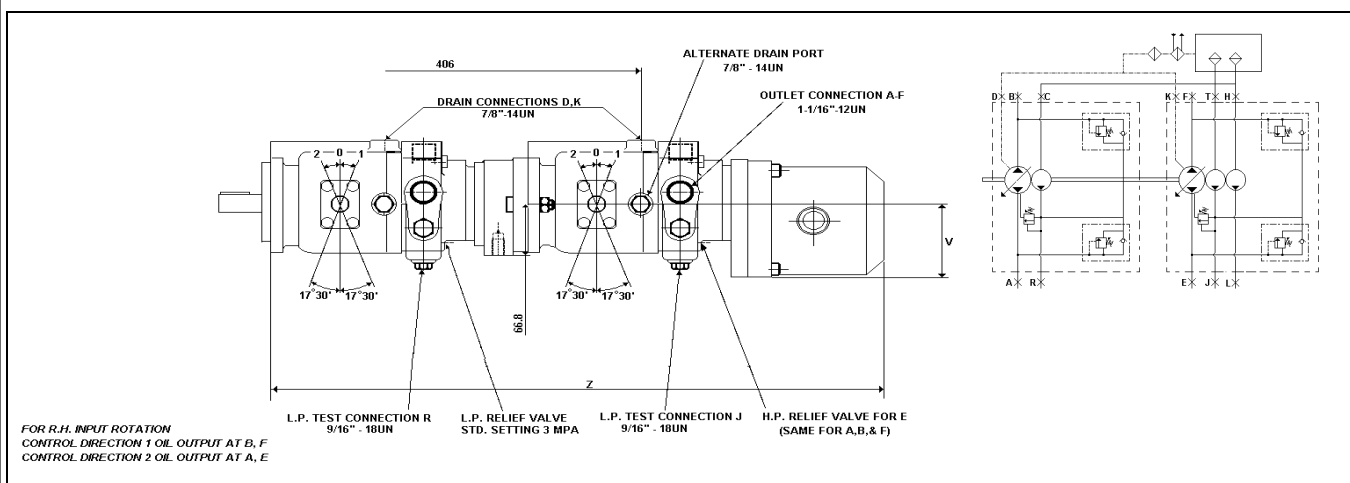
SINGLE TRANSMISSION PUMP



TRANSMISSION PUMP WITH ANCILLIARY PUMP



DOUBLE TRANSMISSION PUMP WITH ANCILLIARY PUMP





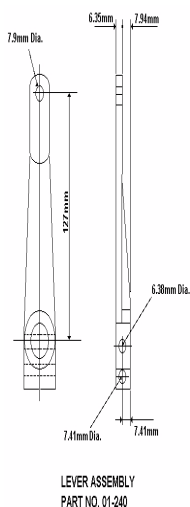
ORDERING CODE

T 3 3 1 D - 30 - 3C - P8 - R

Type
T = Transmission Pump
Mark Number = 3
Size
2 = 22 cc/rev
3 = 33 cc/rev
Shaft
1 = Keyed 7/8"
2 = Splined (B) 13 TOOTH X 7/8"
3 = Splined (B-B) (std. for GB) 15 TOOTH X 1"
Control trunnion (Viewed from shaft)
R = Right hand
L = Left hand
D = Double (Standard)
(Viewed from shaft end)
Main Relief Valve
Standard Settings
15 = 150 BAR
20 = 200 BAR
25 = 250 BAR
30 = 300 BAR

Rotation
R= Right hand
L = Left hand
(Viewed from shaft end)
Ancillary Circuit
P4 = 4.8 cc/rev (G2)
P6.3 = 6.5 cc/rev (G2)
P8 = 8.3 cc/rev (G2)
P11.2 = 11.1 cc/rev (G2)
P14 = 14.4 cc/rev (G2)
P16 = 16.6 cc/rev (G2)
P20 = 20.8 cc/rev (G2)
P25 = 26 cc/rev (G2)
P27 = 27 cc/rev (G2)
P34 = 34 cc/rev (G3)
E2 = Group 2 Adaptor
E3 = Group 3 Adaptor
GB = SAE B Adaptor (1st Pump)
(Omit if not required)
Boost Capacity/Pressure
1C = 15 cc/rev, 4 BAR
2C = 15 cc/rev, 7 BAR
3C = 10 cc/rev, 4 BAR (STD)
4C = 10 cc/rev, 7 BAR
5C = 10 cc/rev, 13 BAR

NB: FOR DOUBLE PUMPS CHOOSE A "GB" OPTION IN THE FIRST PUMP CODE AND A SECOND PUMP WITH A CODE 2 SPLINED INPUT SHAFT.



DESCRIPTION	Part No. - Typical
Single Pump Only	T332D-30-3C-R
Single Pump with 'E2' PLP20 Anc. Pump Flange	T332D-30-3C-E2-R
Single Pump with 'E3' PLP30 Anc. Pump Flange	T332D-30-3C-E3-R
Single Pump with 'GB' SAE 'B' Anc. Pump Flange (1st pump)	T333D-30-3C-GB-R
Single Pump with P4 cc/rev Anc. Pump	T332D-30-3C-P4-R
Single Pump with P6.3 cc/rev Anc. Pump	T332D-30-3C-P6-R
Single Pump with P8 cc/rev Anc. Pump	T332D-30-3C-P8-R
Single Pump with P11 cc/rev Anc. Pump	T332D-30-3C-P11-R
Single Pump with P14 cc/rev Anc. Pump	T332D-30-3C-P14-R
Single Pump with P16 cc/rev Anc. Pump	T332D-30-3C-P16-R
Single Pump with P20 cc/rev Anc. Pump	T332D-30-3C-P20-R
Single Pump with P25 cc/rev Anc. Pump	T332D-30-3C-P25-R
Single Pump with P27 cc/rev Anc. Pump	T332D-30-3C-P27-R
Single Pump with P34 cc/rev Anc. Pump	T332D-30-3C-P34-R
Control Lever	01-240