



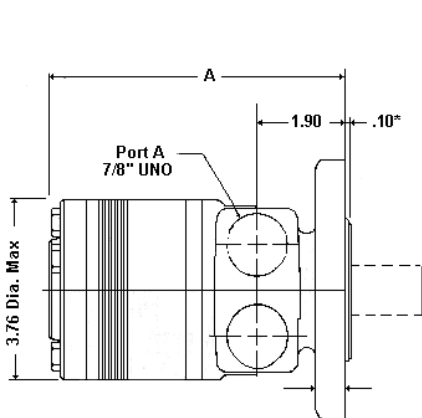
TE Series

Formerly MF Series

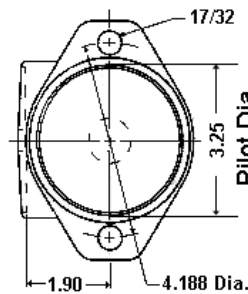
Low - Speed

High - Torque

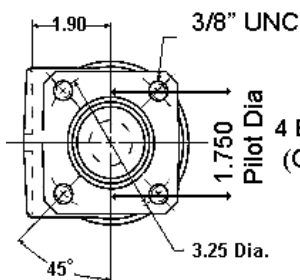
Mounting



Rotation 'A' Port = Clockwise

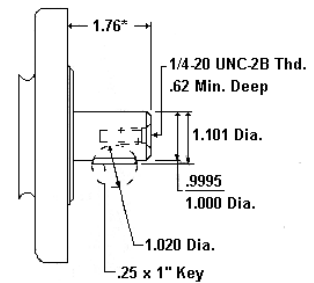


SAE "A" Flange
2 Bolt Mount
(Code A)

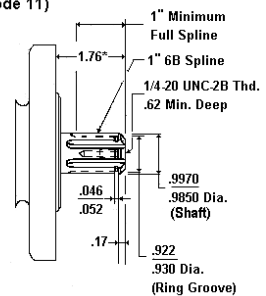


4 Bolt Mount
(Code F)

Short Woodruff Key (Code 10)



Short 6 B Spline (Code 11)



TorqMotor TE Series Roller Vane Motor

For powering conveyors, irrigation equipment and scissor lifts where moderate torque is required and durability is a must, the TE TorqMotor is ideal. The roller vane TE design provides reliable and efficient performance and long-term economy in a broad range of applications.

MF Series



2 Bolt Mount * 1" Keyed Shaft		4 Bolt Mount * 1" Keyed Shaft	
Part No.	Ref. No.	Part No.	Ref. No.
MF-02-06-10-AAAB	TE-0045-AS-100-AAAB	MF-02-09-10-AAAB	TE-0045-FS-100-AAAB
MF-03-06-10-AAAB	TE-0050-AS-100-AAAB	MF-03-09-10-AAAB	TE-0050-FS-100-AAAB
MF-04-06-10-AAAB	TE-0065-AS-100-AAAB	MF-04-09-10-AAAB	TE-0065-FS-100-AAAB
MF-05-06-10-AAAB	TE-0080-AS-100-AAAB	MF-05-09-10-AAAB	TE-0080-FS-100-AAAB
MF-06-06-10-AAAB	TE-0100-AS-100-AAAB	MF-06-09-10-AAAB	TE-0100-FS-100-AAAB
MF-08-06-10-AAAB	TE-0130-AS-100-AAAB	MF-08-09-10-AAAB	TE-0130-FS-100-AAAB
MF-10-06-10-AAAB	TE-0165-AS-100-AAAB	MF-10-09-10-AAAB	TE-0165-FS-100-AAAB
MF-12-06-10-AAAB	TE-0195-AS-100-AAAB	MF-12-09-10-AAAB	TE-0195-FS-100-AAAB
MF-14-06-10-AAAB	TE-0230-AS-100-AAAB	MF-14-09-10-AAAB	TE-0230-FS-100-AAAB
MF-16-06-10-AAAB	TE-0260-AS-100-AAAB	MF-16-09-10-AAAB	TE-0260-FS-100-AAAB
MF-18-06-10-AAAB	TE-0295-AS-100-AAAB	MF-18-09-10-AAAB	TE-0295-FS-100-AAAB
MF-20-06-10-AAAB	TE-0330-AS-100-AAAB	MF-20-09-10-AAAB	TE-0330-FS-100-AAAB
MF-22-06-10-AAAB	TE-0365-AS-100-AAAB	MF-22-09-10-AAAB	TE-0365-FS-100-AAAB
MF-24-06-10-AAAB	TE-0390-AS-100-AAAB	MF-24-09-10-AAAB	TE-0390-FS-100-AAAB

SEAL KIT
SK000090

MODEL		Displacement		Pressure BAR		Flow L/Min		Torque				Speed Max	Dim A
Part	Ref.	CC	C/In	Cont	Int	Cont	Max	Nm		In/Lbs		RPM	
Number	Number							Cont	Max	Cont	Max		
MF-02	TE-0045	41	2.5	140	190	34	42	71	99	624	876	1024	136
MF-03	TE-0050	49	3	140	190	34	50	90	127	796	1120	1020	138
MF-04	TE-0065	65	4	140	190	45	57	125	176	1106	1558	877	141
MF-05	TE-0080	82	5	140	190	45	57	160	220	1416	1947	695	144
MF-06	TE-0100	98	6	140	190	45	57	190	264	1682	2337	582	147
MF-08	TE-0130	130	8	140	190	45	57	255	352	2257	3116	438	154
MF-10	TE-0165	163	10	140	190	45	57	310	436	2744	3846	348	160
MF-12	TE-0195	195	11.9	140	190	45	57	390	528	3452	4673	292	166
MF-14	TE-0230	228	13.90	120	165	57	75	380	514	3363	4554	328	173
MF-16	TE-0260	260	15.9	110	155	57	75	400	550	3540	4870	287	179
MF-18	TE-0295	293	17.9	100	145	57	75	428	582	3784	5180	256	185
MF-20	TE-0330	328	20	100	135	57	75	443	600	3926	5312	228	192
MF-22	TE-0365	370	22.6	95	125	57	75	467	648	4133	5728	203	200
MF-24	TE-0390	392	24	85	120	57	75	445	628	3935	5562	191	205

The above units are our stock range, other shaft and port options are available by conversion. The conversions incur a cost penalty which is additional to the above prices.
NB: This cost penalty will be waived for build codes obtained from the factory for your specific requirements.

Part No.	CONVERSION LABOUR CHARGE	
	Code	Description
TE/11	11	1" 6B SPLINE SHAFT
TE/09	09	1" CROSS HOLE SHAFT
TE/26	26	25mm KEYED SHAFT
TE/M	M	MANIFOLD PORT OPTION
TE/U	U	WHEEL MOUNT