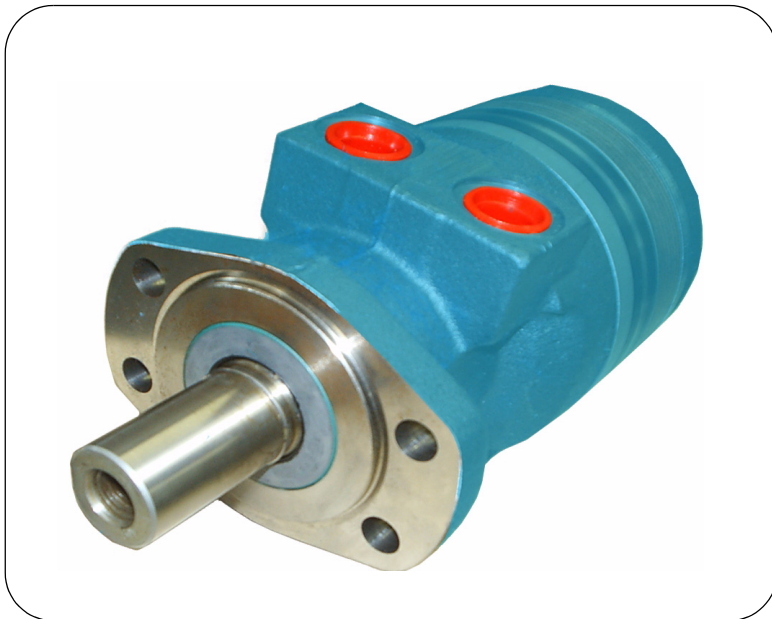


TF/TG Series

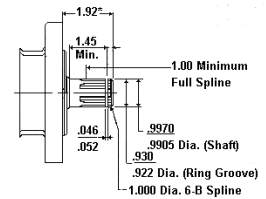
Formerly MB/ME Series

Low - Speed

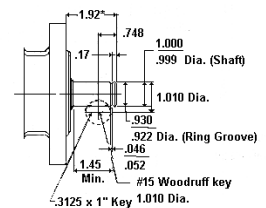
High - Torque



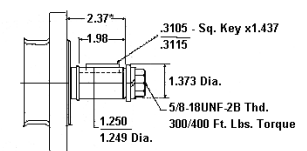
**6B Spline
(Code 01)**



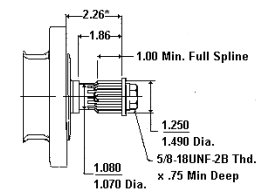
**Woodruff Key
(Code 02)**



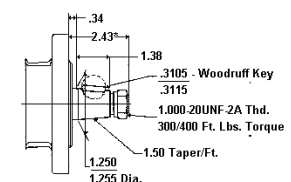
**Straight Key
(Code 03)**



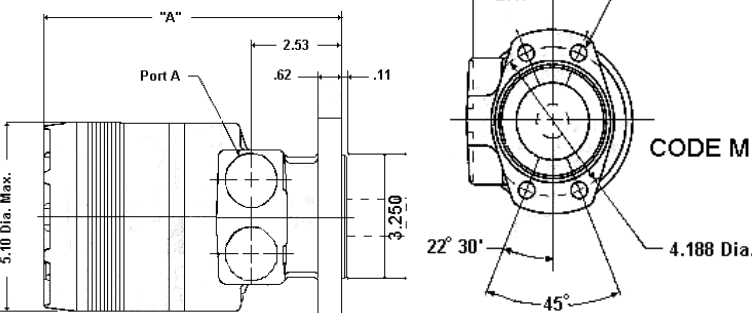
**14 Tooth Spline
(Code 05)**



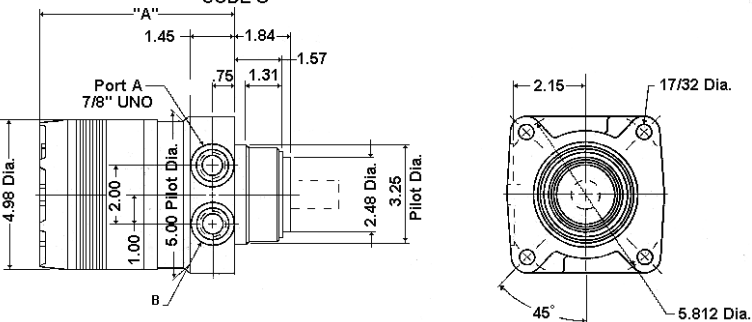
**Tapered
(Code 08)**



SAE 'A' FLOAT MAGNETO MOUNT



Wheel Mount



TorqMotor TG Series Roller Vane Motor

Truly the premier motor in its class, the TG TorqMotor provides high torque and maximum endurance under strenuous conditions. The TG is a proven top performer in applications like wheel drives for skid steer loaders, air-port ground support equipment and municipal sweepers.

The TG is simple and reliable. The design requires fewer parts compared to most competitive motors. The use of the roller vanes reduces friction and minimises internal leakage in the TG to promote optimum motor performance and life.

Magneto Mount * 1- 1/4" Keyed Shaft		Wheel Mount * 1- 1/4" Tapered Shaft	
Part No.	Ref. No.	Part No.	Ref. No.
MB-05-01-03-AAAB	TF-0080-MS-030-AAAB	MB-05-02-08-AABP	TF-0080-US-080-AABP
MB-06-01-03-AAAB	TF-0100-MS-030-AAAB	MB-06-02-08-AABP	TF-0100-US-080-AABP
MB-08-01-03-AAAB	TF-0130-MS-030-AAAB	MB-08-02-08-AABP	TF-0130-US-080-AABP
ME-09-01-03-AAAB	TG-0140-MS-030-AAAB	ME-09-02-08-AABP	TG-0140-US-080-AABP
ME-10-01-03-AAAB	TG-0170-MS-030-AAAB	ME-10-02-08-AABP	TG-0170-US-080-AABP
ME-12-01-03-AAAB	TG-0195-MS-030-AAAB	ME-12-02-08-AABP	TG-0195-US-080-AABP
ME-15-01-03-AAAB	TG-0240-MS-030-AAAB	ME-15-02-08-AABP	TG-0240-US-080-AABP
ME-18-01-03-AAAB	TG-0280-MS-030-AAAB	ME-18-02-08-AABP	TG-0280-US-080-AABP
ME-21-01-03-AAAB	TG-0335-MS-030-AAAB	ME-21-02-08-AABP	TG-0335-US-080-AABP
ME-24-01-03-AAAB	TG-0405-MS-030-AAAB	ME-24-02-08-AABP	TG-0405-US-080-AABP
ME-29-01-03-AAAB	TG-0475-MS-030-AAAB	ME-29-02-08-AABP	TG-0475-US-080-AABP
ME-33-01-03-AAAB	TG-0530-MS-030-AAAB	ME-33-02-08-AABP	TG-0530-US-080-AABP
ME-37-01-03-AAAB	TG-0625-MS-030-AAAB	ME-37-02-08-AABP	TG-0625-US-080-AABP
ME-48-01-03-AAAB	TG-0785-MS-030-AAAB	ME-48-02-08-AABP	TG-0785-US-080-AABP
ME-58-01-03-AAAB	TG-0960-MS-030-AAAB	ME-58-02-08-AABP	TG-0960-US-080-AABP

SEAL KIT
SK000092

MODEL		Displacement		Pressure BAR		Flow L/Min		Torque				Speed Max	Dim A	
Part	Ref.	CC	C/In	Cont	Int	Cont	Max	Nm		In/Lbs		RPM	Magneto	Wheel
Number	Number							Cont	Max	Cont	Max			
MB-05	TF-0080	81	4.9	207	276	46	57	220	296	1948	2621	693	191	146
MB-06	TF-0100	100	6.1	155	241	57	76	197	318	1746	2813	749	191	146
MB-08	TF-0130	128	7.8	138	207	57	76	229	356	2031	3148	593	194	149
ME-09	TG-0140	140	8.6	211	281	76	95	390	530	3455	4692	660	196	150
ME-10	TG-0170	169	10.3	211	281	76	95	476	646	4216	5714	554	199	154
ME-12	TG-0195	195	11.9	211	281	76	95	556	753	4919	6663	477	202	157
ME-15	TG-0240	237	14.5	211	281	76	95	677	913	5991	8081	393	207	161
ME-18	TG-0280	280	17.1	211	281	76	95	796	1073	7044	9499	334	211	166
ME-21	TG-0335	337	20.6	211	281	76	95	964	1297	8533	11479	277	218	173
ME-24	TG-0405	405	24.7	176	246	76	95	942	1342	8336	11877	232	225	180
ME-29	TG-0475	476	29.1	141	211	76	114	887	1372	7853	12145	237	234	188
ME-33	TG-0530	529	32.3	141	176	76	114	983	1253	8701	11086	213	240	195
ME-37	TG-0625	624	38	123	158	76	114	986	1291	8125	11424	182	250	204
ME-48	TG-0785	786	48	106	141	76	114	1044	1428	9239	12636	143	267	223
ME-58	TG-0960	985	58.5	70	106	76	114	773	1268	6843	11227	118	288	242

The above units are our stock range, other shaft and port options are available by conversion. The conversions incur a cost penalty which is additional to the above prices.

NB: This cost penalty will be waived for build codes obtained from the factory for your specific requirements.

Part No.	CONVERSION LABOUR CHARGE	
	Shaft Code	Description
TG/01	01	1" 6B SPLINE SHAFT
TG/02	02	1" KEYED SHAFT
TG/05	05	1-1/4" 14 TOOTH SPLINE
TG/06	06	19 TOOTH SPLINE
TG/19	19	1-3/8" TAPER SHAFT