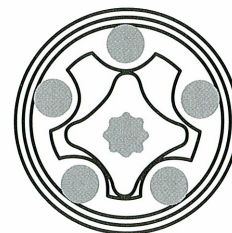


## MAMM MINI-SERIES - GEROTOR TYPE



These units provide high output torque from a very small package. The MAMM motors are fixed displacement, gerotor type units that are known for compactness and economy. All MAMM motors have built-in check valves assuring pressure on the shaft seal never exceeds pressure levels seen in the return line.

Round Mount/Rear Ports/16mm Keyed Shaft	
Part No.	
MAMM-8-C	
MAMM-12.5-C	
MAMM-20-C	
MAMM-32-C	
MAMM-40-C	
MAMM-50-C	
MAMM-OVAL MOUNT (F)	

The above options are our stock lines

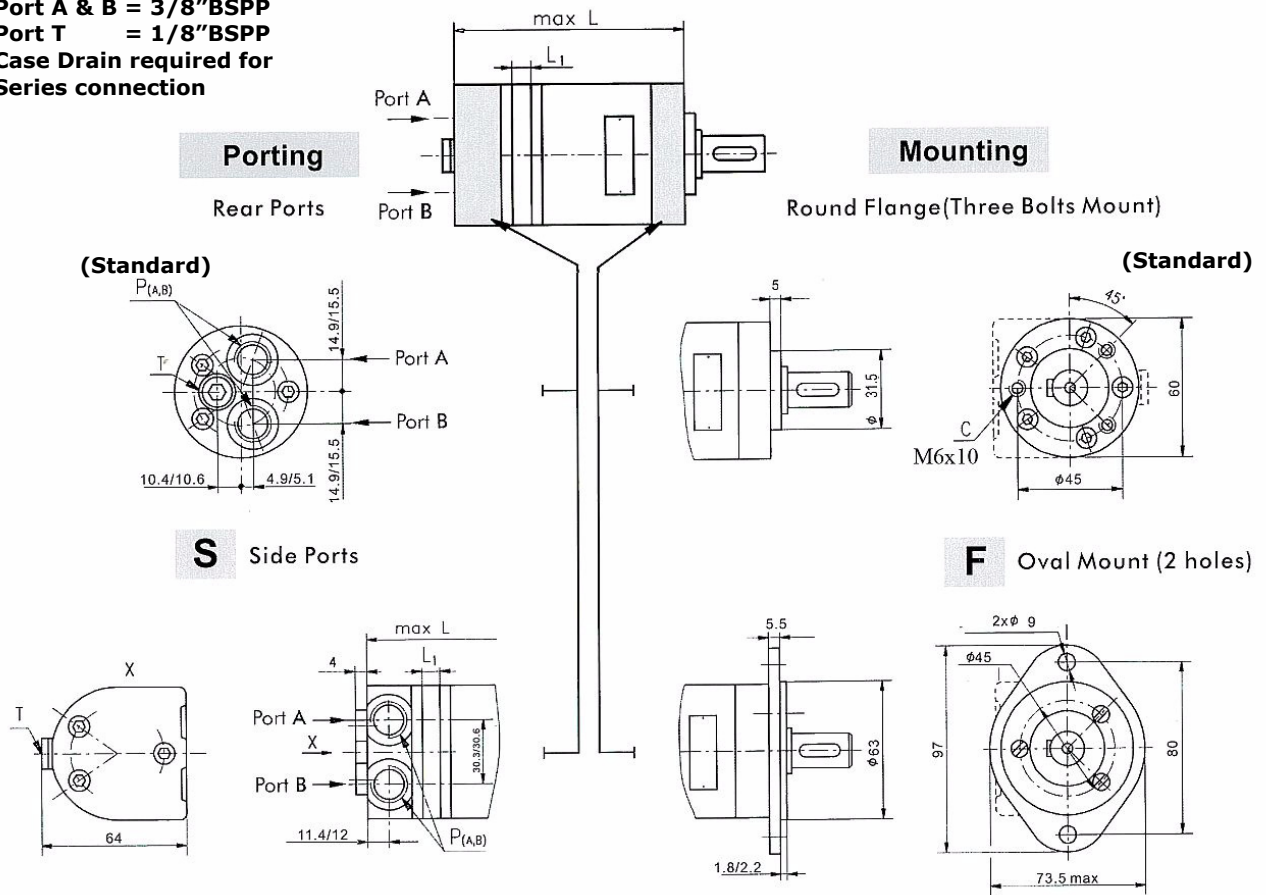
For Flange Mounts Purchase the Oval Mount as a separate item.

Other shafts and side port options are available for quantity purchase ex the factory

SEAL KIT	
Part No.	
SK-MAMM	

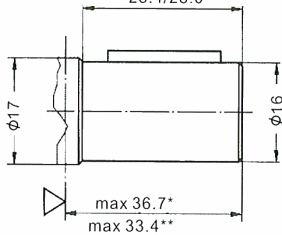
Part No.	DISP CC/ REV	PRESSURE BAR		FLOW L/MIN		TORQUE				SPEED RPM		WEIGHT Kg
		CONT.	INT.	CONT.	INT.	NM		IN/LBS		CONT.	INT.	
						CONT.	INT.	CONT.	INT.			
MAMM-8-C	8.2	100	140	16	20	11	15	102	133	1950	2450	1.9
MAMM-12.5-C	12.9	100	140	20	25	16	23	145	204	1550	1940	2
MAMM-20-C	19.9	100	140	20	25	25	35	225	310	1000	1250	2.1
MAMM-32-C	31.6	100	140	20	25	41	57	367	504	630	800	2.2
MAMM-40-C	39.8	80	110	20	25	42	58	375	513	500	630	2.3
MAMM-50-C	50.3	70	90	20	25	46	59	407	522	400	500	2.4

Port A & B = 3/8"BSPP  
Port T = 1/8"BSPP  
Case Drain required for Series connection

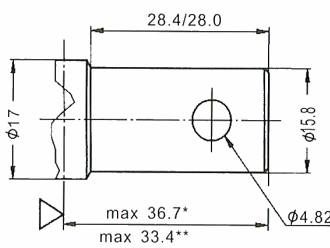


**SHAFT OPTIONS**

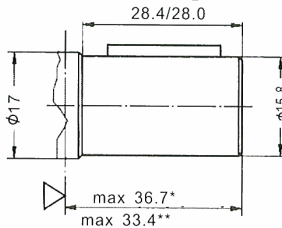
**C** 16mm Diam (Standard)  
Parallel Key 5x5x16  
Max. Torque 39nm  
28.4/28.0



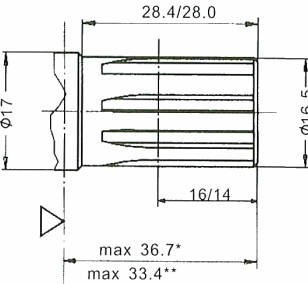
**H** 5/8" Diam  
Crosshole  
Max. Torque 39nm  
28.4/28.0



**CO** 5/8" Diam  
Parallel Key  
3/16"x3/16"x3/4"  
Max. Torque 39nm  
28.4/28.0



**S** 16.5 Splined B17x4  
Max. Torque 44  
28.4/28.0



\* = Round Flange  
\*\* = Oval Flange

DIMENSIONS			
Model	L1 mm	Rear Ports L mm	Side Ports L mm
MAMM-8	3.5	104	105
MAMM-12.5	5.5	106	107
MAMM-20	8.5	109	110
MAMM-32	13.5	114	115
MAMM-40	17.0	117	118
MAMM-50	21.5	122	123