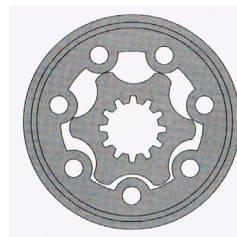


MAP SERIES - GEROTOR TYPE



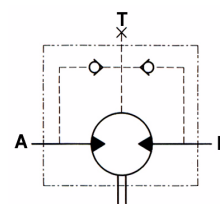
Features:

Similar to Danfoss "OMP" series

The MAP Series are GEROTOR type 'Low Speed High Torque' Torqmotors. Their compact design delivers high output torque for a small frame unit at an economical price.

These Torqmotors are suitable for such applications as:

- Conveyor drives
- Winches
- Agricultural machinery
- Forestry machinery
- Cranes
- Sawmill equipment
- Elevators



SAE 'A' 2 BOLT MOUNT / 1" KEYED SHAFT	
Part No.	
MAP-50-A-CO-D	
MAP-80-A-CO-D	
MAP-100-A-CO-D	
MAP-125-A-CO-D	
MAP-160-A-CO-D	
MAP-200-A-CO-D	
MAP-250-A-CO-N-D	
MAP-315-A-CO-N-D	
MAP-400-A-CO-N-D	

SQUARE MOUNT 4 BOLT / 1" KEYED SHAFT	
Part No.	
MAP-50-Q-CO-D	
MAP-80-Q-CO-D	
MAP-100-Q-CO-D	
MAP-125-Q-CO-D	
MAP-160-Q-CO-D	
MAP-200-Q-CO-D	
MAP-250-Q-CO-D	
MAP-315-Q-CO-N-D	
MAP-400-Q-CO-N-D	

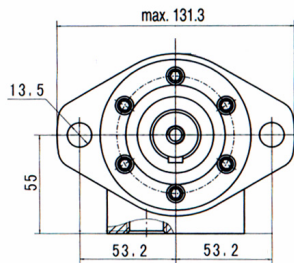
The Above Options are our stock lines, other Shaft and mount option are available for quantity purchase ex the factory.

SEAL KIT
Part No.
SK-MAP

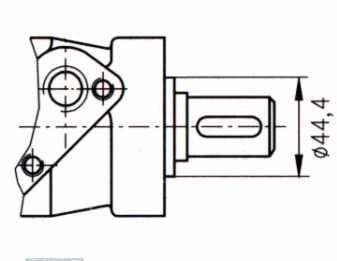
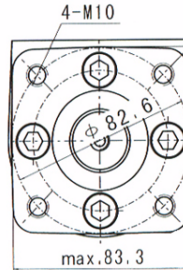
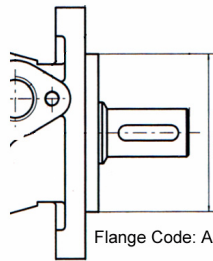
PERFORMANCE FIGURES

Model	DISP CC/ REV	PRESSURE BAR		FLOW L/MIN		TORQUE				SPEED RPM		WEIGHT Kg
		CONT.	INT.	CONT.	INT.	NM		IN/LBS		CONT.	INT.	
						CONT.	INT.	CONT.	INT.			
MAP-50	51	140	175	50	60	93	120	820	1062	1180	1380	5.6
MAP-80	79	140	175	60	75	149	190	1320	1682	760	940	5.7
MAP-100	99	140	175	60	75	190	230	1682	2036	600	750	5.9
MAP-125	123	140	175	60	75	234	290	2068	2567	485	600	6
MAP-160	158	140	175	60	75	310	370	2744	3275	380	475	6.2
MAP-200	197	135	160	60	75	359	435	3177	3850	302	380	6.4
MAP-250	247	105	140	60	75	351	468	3108	4144	240	302	6.6
MAP-315	316	80	115	60	75	342	492	3028	4353	190	235	6.9
MAP-400	396	65	90	60	75	348	454	3083	4017	150	190	7.4

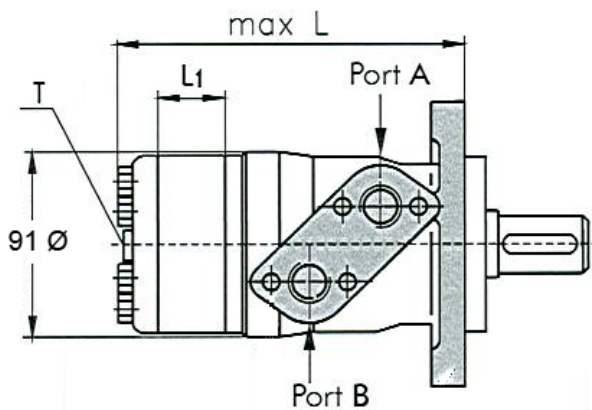
MAP SERIES - GEROTOR TYPE



A Mount



Q Mount



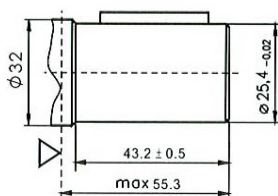
DIMENSIONS		
Model	L mm	L1 mm
MAP-50	137	7
MAP-80	140.5	10.5
MAP-100	143	13
MAP-125	146	16
MAP-160	151	21
MAP-200	157	26
MAP-250	162	32
MAP-315	172	42
MAP-400	182	52

Ports A & B = 1/2" BSPP
 Drain Port T = 1/4" BSPP

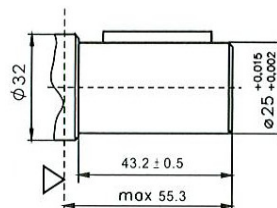
"Case Drain required for Series connection"

Flow in Port "A" = Clockwise
 Flow in Port "B" = Counterclockwise

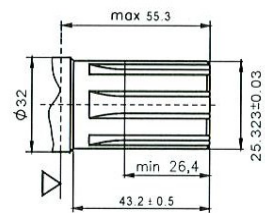
CO $\varnothing 1"$ straight, Parallel key 1/4" x 1/4" x 1/4"



C $\varnothing 25$ straight, Parallel key A8x7x32
 Max. Torque 340Nm



S Splined, (SAE 6B)



- NB:
- 1/ Intermittent operation values may occur for max 10% of every minute.
 - 2/ Intermittent speed and intermittent pressure may not occur at the same time.
 - 3/ Recommended filtration to **ISO 4406:1999 Cleanliness Code 19/17/14**.
 - 4/ Recommended operation temperature range is 20°C to 55°C with a max of 80°C for brief periods.
 - 5/ To assure optimum motor life, fill with fluid prior to loading and run for 1 hour at moderate load and speed.
 - 6/ The hydraulic fluid must be a premium quality mineral based oil with anti wear additives.