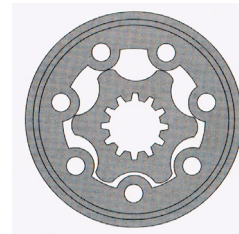


MAPH SERIES - GEROTOR TYPE



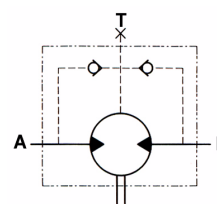
Features:

Similar to Charlynn "H" series.

The MAPH Series are GEROTOR type 'Low Speed High Torque' Torqmotors. Their compact design delivers high output torque for a small frame unit at an economical price.

These Torqmotors are suitable for such applications as:

- Conveyor drives
- Winches
- Agricultural machinery
- Forestry machinery
- Cranes
- Sawmill equipment
- Elevators



SAE 'A' 2 BOLT MOUNT / 1" KEYED SHAFT	
Part No.	
MAPH-50-A-CO-U-D	
MAPH-80-A-CO-U-D	
MAPH-100-A-CO-U-D	
MAPH-125-A-CO-U-D	
MAPH-160-A-CO-U-D	
MAPH-200-A-CO-U-D	
MAPH-250-A-CO-U-D	
MAPH-315-A-CO-U-D	
MAPH-400-A-CO-U-D	

SQUARE MOUNT 4 BOLT / 1" KEYED SHAFT	
Part No.	
MAPH-50-Q-CO-U-D	
MAPH-80-Q-CO-U-D	
MAPH-100-Q-CO-U-D	
MAPH-125-Q-CO-U-D	
MAPH-160-Q-CO-U-D	
MAPH-200-Q-CO-U-D	
MAPH-250-Q-CO-U-D	
MAPH-315-Q-CO-U-D	
MAPH-400-Q-CO-U-D	

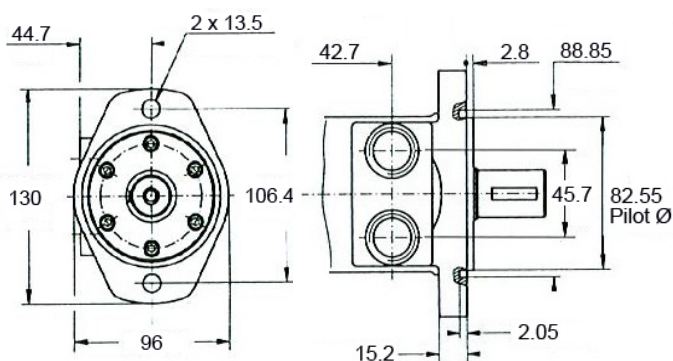
The Above Options are our stock lines, other Shaft and mount option are available for quantity purchase ex the factory.

SEAL KIT	
Part No.	
SK-MAPH	

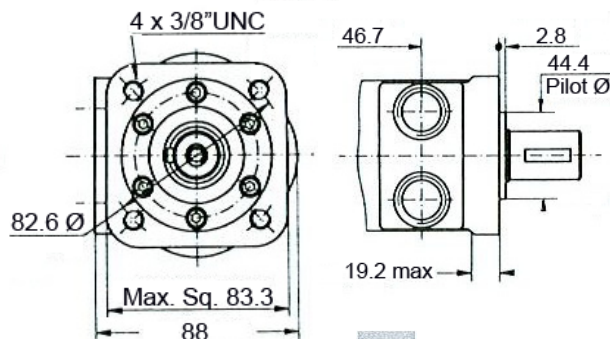
PERFORMANCE FIGURES

Model	DISP CC/REV	PRESSURE BAR		FLOW L/MIN		TORQUE				SPEED RPM		WEIGHT Kg
		CONT.	INT.	CONT.	INT.	NM		IN/LBS		CONT.	INT.	
						CONT.	INT.	CONT.	INT.			
MAPH-50	51	140	175	60	75	93	120	820	1062	1180	1380	5.6
MAPH-80	79	140	175	60	75	149	190	1320	1682	760	940	5.7
MAPH-100	99	140	175	60	75	190	230	1682	2036	600	750	5.9
MAPH-125	123	140	175	60	75	234	290	2068	2567	485	600	6
MAPH-160	159	140	175	60	75	310	370	2744	3275	380	475	6.2
MAPH-200	198	135	160	60	75	359	435	3177	3850	302	380	6.4
MAPH-250	247	105	140	60	75	351	468	3108	4144	240	302	6.6
MAPH-315	316	80	115	60	75	342	492	3028	4353	190	235	6.9
MAPH-400	396	65	90	60	75	348	454	3083	4017	150	190	7.4

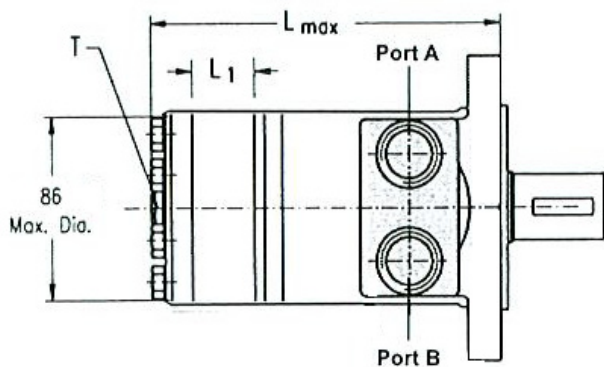
MAPH SERIES - GEROTOR TYPE



A Mount



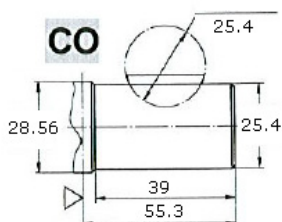
Q Mount



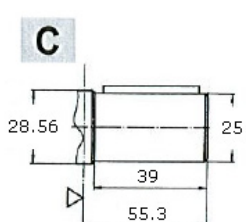
DIMENSIONS		
Model	L	L1
MAPH-50	141	7
MAPH-80	144.5	10
MAPH-100	147	13
MAPH-125	150	16
MAPH-160	155	21
MAPH-200	160	26
MAPH-250	166	32
MAPH-315	176	42
MAPH-400	186	52

Ports A & B = 7/8" UNO
Drain Port T = 7/16" UNO
Case Drain required for Series connection

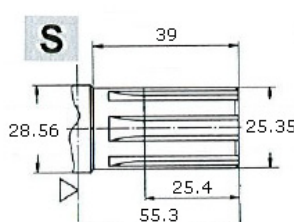
Flow in Port A = Clockwise
Flow in Port B = Counterclockwise



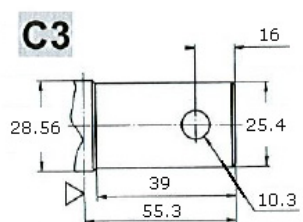
1" [25,4], Woodruff key 1/4"x1"



ø25, Parallel key A8x7x28



1" [25,4], SAE 6B Splined



1" [25,4] straight pin hole ø10.3

- NB:
- 1/ Intermittent operation values may occur for Max 10% of every minute.
 - 2/ Intermittent speed and intermittent pressure may not occur at the same time.
 - 3/ Recommended filtration to **ISO 4406:1999 Cleanliness Code 19/17/14**.
 - 4/ Recommended operation temperature range is 20°C to 55°C with a Max of 80°C for brief periods.
 - 5/ To assure optimum motor life, fill with fluid prior to loading and run for 1 hour at moderate load and speed.
 - 6/ The hydraulic fluid must be a Premium quality mineral based oil with anti wear additives.