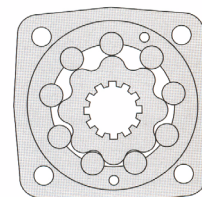
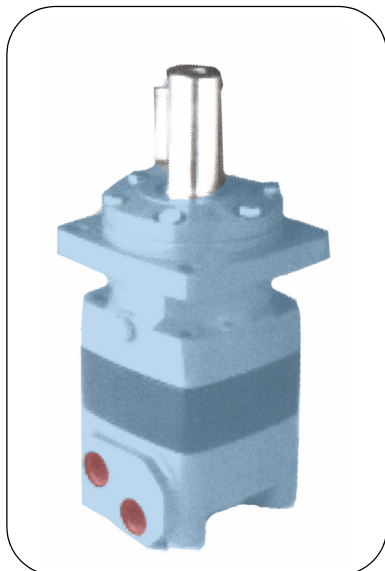


MAT SERIES - GEROLER TYPE



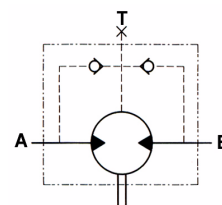
Features:

Similar to Danfoss "OMT" series

The MAT Series are GEROLER type 'Low Speed High Torque' Torqmotors. They feature larger output shafts supported on tapered roller bearings for those more arduous applications.

These Torqmotors are suitable for such applications as:

- Conveyor drives
- Winches
- Agricultural machinery
- Forestry machinery
- Cranes
- Sawmill equipment
- Elevators



4 BOLT MOUNT 40mm KEYED SHAFT	
Part No.	
MAT-160-C	
MAT-200-C	
MAT-250-C	
MAT-315-C	
MAT-400-C	
MAT-500-C	
MAT-630-C	
MAT-800-C	

SEAL KIT	
Part No.	
SK-MAT	

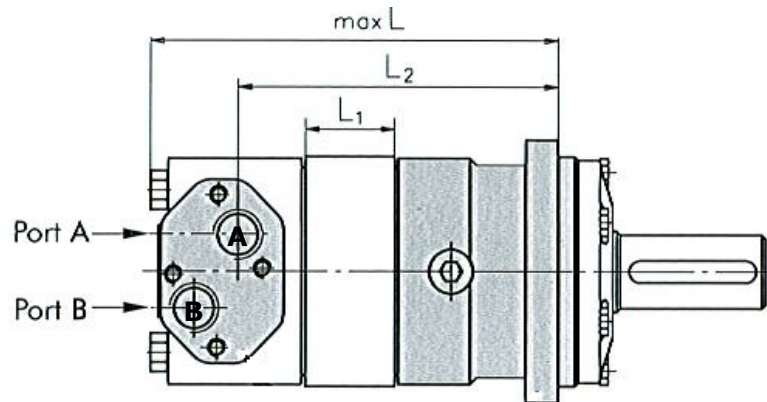
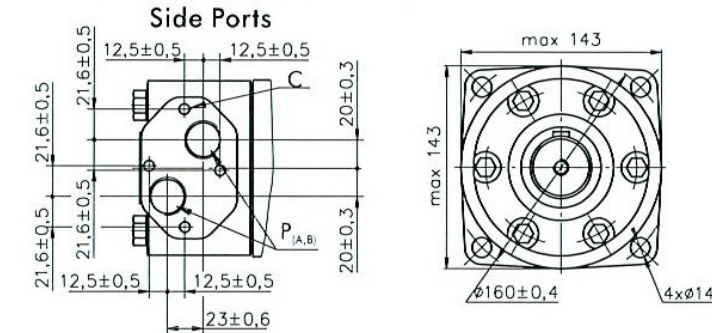
The Above Options are our stock lines, other Shaft and mount option are available for quantity purchase ex the factory.

PERFORMANCE FIGURES

Model	DISP CC/ REV	PRESSURE BAR		FLOW L/MIN		TORQUE				SPEED RPM		WEIGHT KG
		CONT.	INT.	CONT.	INT.	NM		IN/LBS		CONT.	INT.	
						CONT.	INT.	CONT.	INT.			
MAT-160	161	200	240	100	125	471	573	4145	5042	614	770	20
MAT-200	201	200	240	125	150	589	718	5183	6318	615	720	21
MAT-250	252	200	240	125	150	730	880	6424	7744	495	600	21.5
MAT-315	319	200	240	125	150	948	1138	8342	10014	380	458	22
MAT-400	402	180	210	125	150	1078	1259	9486	11079	300	360	23
MAT-500	523	160	180	125	150	1220	1370	10797	12125	237	284	24
MAT-630	629	140	160	125	150	1321	1500	11691	13275	196	233	25
MAT-800	801	125	130	125	150	1462	1520	12939	13452	154	185	26

MAT SERIES - GEROLER TYPE

Porting

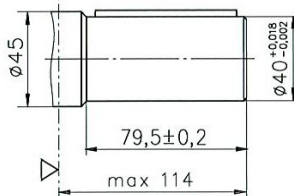


Ports A & B = 3/4"BSPP
Drain Port T = 1/4"BSPP
Mount Hole "C" = 4 x M10-12mm deep
Case Drain required for Series connection

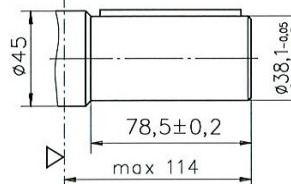
DIMENSIONS			
Model	L mm	L1 mm	L2 mm
MAT-160	194	14	141
MAT-200	199	19	146
MAT-250	201	21	148
MAT-315	207	27	154
MAT-400	214	34	161
MAT-500	222	42	169
MAT-630	234	54	181
MAT-800	245	65	192

Flow in Port a = Clockwise
Flow in Port B = Counterclockwise

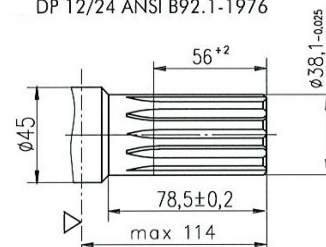
C -ø40 straight,
Parallel key A12x8x70 DIN 6885



CO -ø1½" straight,
Parallel key 3/8"x 3/4"x 2¼" BS46



SH -ø1½" splined 17T,
DP 12/24 ANSI B92.1-1976



- NB:
- 1/ Intermittent operation values may occur for Max 10% of every minute.
 - 2/ Intermittent speed and intermittent pressure may not occur at the same time.
 - 3/ Recommended filtration to **ISO 4406:1999 Cleanliness Code 19/17/14**.
 - 4/ Recommended operation temperature range is 20°C to 55°C with a Max of 80°C for brief periods.
 - 5/ To assure optimum motor life, fill with fluid prior to loading and run for 1 hour at moderate load and speed.
 - 6/ The hydraulic fluid must be a Premium quality mineral based oil with anti wear additives.