

MAV SERIES - GEROLER TYPE



Features:

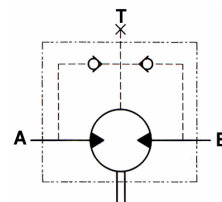
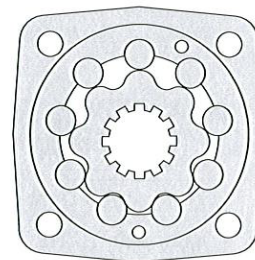
Similar to Danfoss "OMV" series

The **MAV** Series are GEROLER type 'Low Speed High Torque' Torqmotors.

They feature heavy, robust construction for heavy duty industrial type applications.

These Torqmotors are suitable for such applications as:

- Conveyor drives
- Winches
- Agricultural machinery
- Forestry machinery
- Cranes
- Sawmill equipment
- Elevators



4 BOLT MOUNT 50mm KEYED SHAFT	
Part No.	
MAV-315-C	
MAV-400-C	
MAV-500-C	
MAV-630-C	
MAV-800-C	

SEAL KIT	
Part No.	
SK-MAV	

The Above Options are our stock lines, other Shaft and mount option are available for quantity purchase ex the factory.

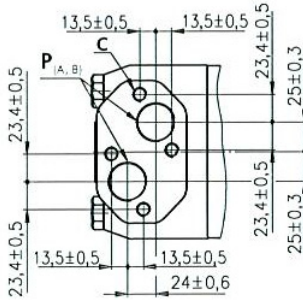
PERFORMANCE FIGURES

Model	DISP CC/ REV	PRESSURE BAR		FLOW L/MIN		TORQUE				SPEED RPM		WEIGHT KG
		CONT.	INT.	CONT.	INT.	NM		IN/LBS		CONT.	INT.	
						CONT.	INT.	CONT.	INT.			
MAV-315	333	200	240	150	220	927	1103	8204	9762	510	630	31.8
MAV-400	419	200	240	170	225	1223	1441	10824	12753	490	590	32.6
MAV-500	518	200	240	200	225	1450	1786	12833	15806	395	470	33.5
MAV-630	666	180	210	200	225	1638	2005	14496	17744	315	375	34.9
MAV-800	801	160	180	200	225	1820	2112	16107	18691	240	300	36.5

MAV SERIES - GEROLER TYPE

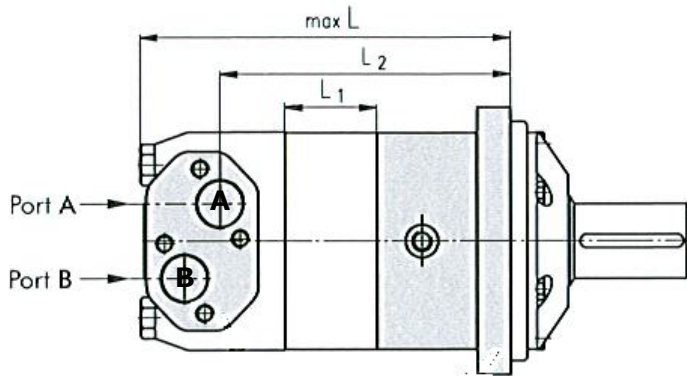
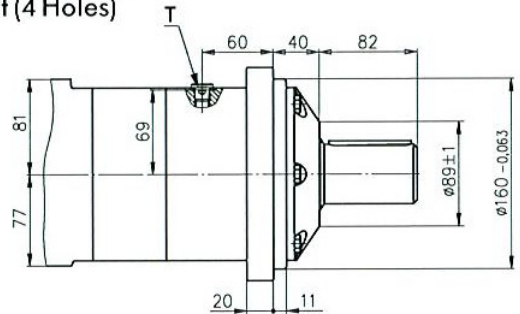
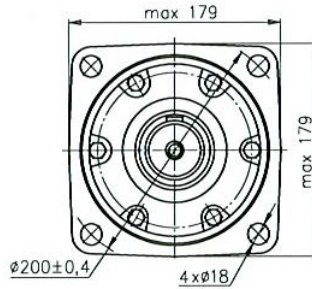
Porting

Side Ports



Mounting

Square Mount (4 Holes)

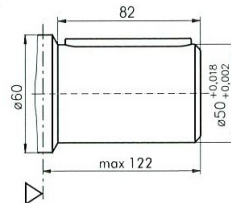


DIMENSIONS			
Model	L mm	L1 mm	L2 mm
MAV-315	203	22	160
MAV-400	210	29	167
MAV-500	218	37	175
MAV-630	230	49	187
MAV-800	241	60	198

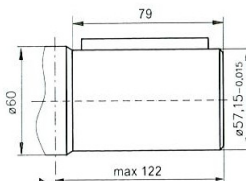
Ports A & B = 1"BSPP
 Drain Port T = 1/4"BSPP
 Mount Hole "C" = 4 x M12-12mm deep
 "Case Drain required for Series connection"

Flow in Port A = Clockwise
 Flow in Port B = Counterclockwise

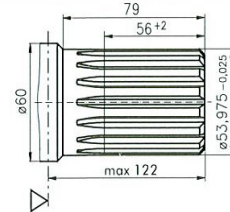
C - Ø50 straight,
 Parallel key A14x9x70



CO - Ø2 1/4" straight,
 Parallel key 1/2" x 1/2" x 2 1/4"



SH - Ø2 1/8" splined,
 16 DP 8/16 ANSI B92.1-1976



NB:

- 1/ Intermittent operation values may occur for Max 10% of every minute.
- 2/ Intermittent speed and intermittent pressure may not occur at the same time.
- 3/ Recommended filtration to **ISO 4406:1999 Cleanliness Code 19/17/14**.
- 4/ Recommended operation temperature range is 20°C to 55°C with a Max of 80°C for brief periods.
- 5/ To assure optimum motor life, fill with fluid prior to loading and run for 1 hour at moderate load and speed.
- 6/ The hydraulic fluid must be a Premium quality mineral based oil with anti wear additives.