

LINE MOUNT VALVES

SINGLE COUNTER-BALANCE VALVES c/w SIGNAL RESTRICTOR

VOSL/N1516 Series

VOSL/V1516 Series

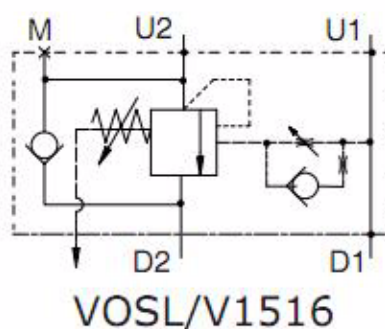
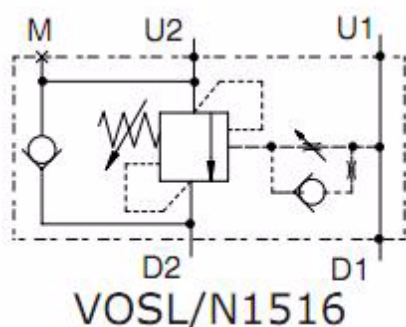
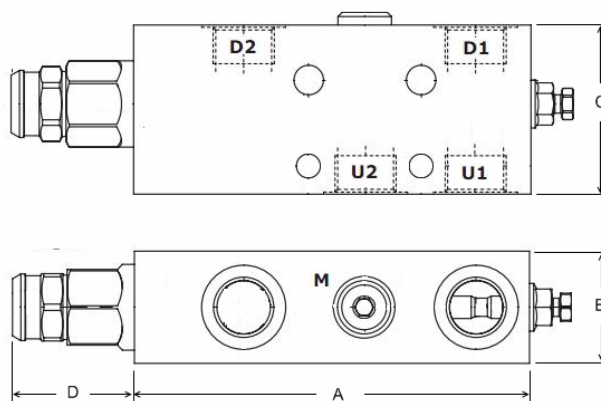
Steel body

The 1516 series is built with zinc plated steel bodies to ensure a top level of strength and durability, these valves can reach a work pressure of 400 bar. All valves in the range are equipped with pilot signal restrictors to ensure smooth and safe operation in every load handling application

N1516 series - This valve controls a moving load preventing it from moving ahead of the pump and locks the load in any position on U1. It also provides static overload and thermal expansion protection when used in combination with an open centre spool valve. It permits free flow from D2 to U2 and blocks the flow from U2 to D2 until a pilot pressure generated at D1/U1 is sufficient to pilot the U2 port open. This model is sensitive to back pressure on D2 in return mode.

V1516 series - As per N1516 but has the spring chamber isolated from system back pressure by a seal and vented to atmosphere. Ideal for use with closed centre spools

Spring Range Options	
Code	bar
G3	5-210
G5	50-350



Part No. (with G5 spring option)	Ports BSPP	Pilot Ratio	M.W.P. BAR Steel	Dim. (mm)				Nom Flow
				A	B	C	D	l/min
VOSL/N1516-12/G5.P4AC	1/2"	4 : 1	400	141	40	60	43.5	150
VOSL/N1516-34/G5.P4AC	3/4"	4 : 1		147	40	80	43.5	150
VOSL/V1516-12/G5.P4AC	1/2"	4 : 1		141	40	60	43.5	150
VOSL/V1516-34/G5.P4AC	3/4"	4 : 1		147	40	80	43.5	150