

DOUBLE COUNTER-BALANCE VALVES c/w SIGNAL RESTRICTOR

VODL/N1516 Series VODL/V1516 Series

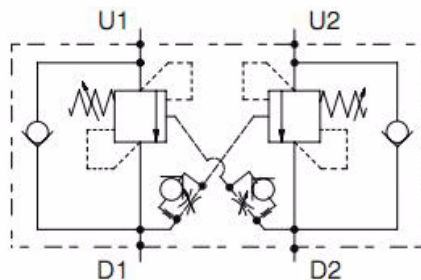
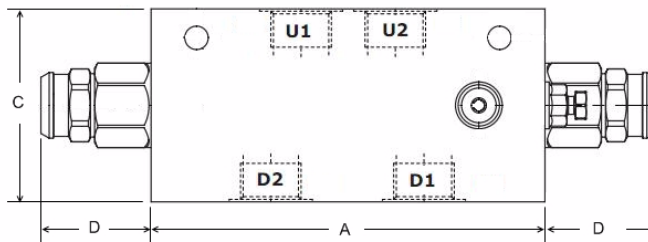
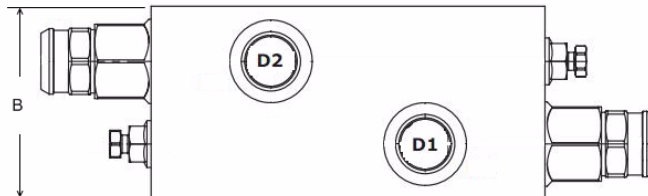
Steel body

The 1516 series is built with zinc plated steel bodies to ensure a top level of strength and durability, these valves can reach a work pressure of 400 bar. All valves in the range are equipped with pilot signal restrictors to ensure smooth and safe operation in every load handling application

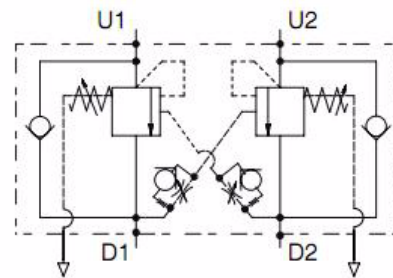
N1516 series - This valve controls a moving load preventing it from moving ahead of the pump and locks the load in any position on U1 and U2. It also provides static overload and thermal expansion protection when used in combination with an open centre spool valve. It permits free flow from D1 to U1 and D2 to U2 and blocks the flow from U1 to D1 and U2 to D2 until a pilot pressure generated at D1 or D2 is sufficient to pilot the U1 or U2 port open.

This model is sensitive to back pressure on D1 and D2 in return mode.

V1516 series - As per N1516 but is insensitive to back pressure on D1 or D2 in return mode.



VODL/N1516/CS



VODL/V1516/CS

Part No. (with G5 spring option)	Ports BSPP	Pilot Ratio	M.W.P. BAR Steel	Dim. (mm)				Nom Flow L/min
				A	B	C	D	
VODL/N1516/CS-12/G5P4	1/2"	4 : 1	400	141	40	60	43.5	150
VODL/N1516/CS-34/G5P4	3/4"	4 : 1		147	40	80	43.5	150
VODL/V1516/CS-12/G5P4	1/2"	4 : 1		135	70	70	43.5	150
VODL/V1516/CS-34/G5P4	3/4"	4 : 1		135	70	70	43.5	150