

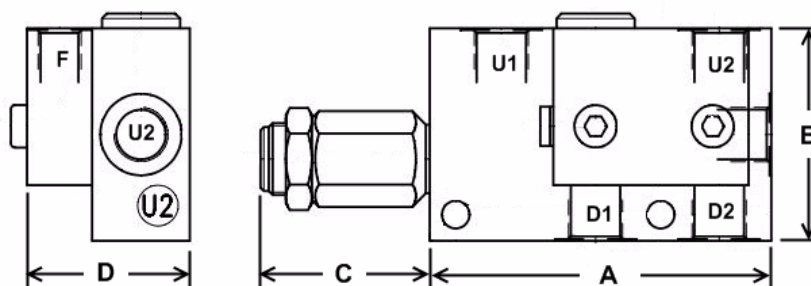
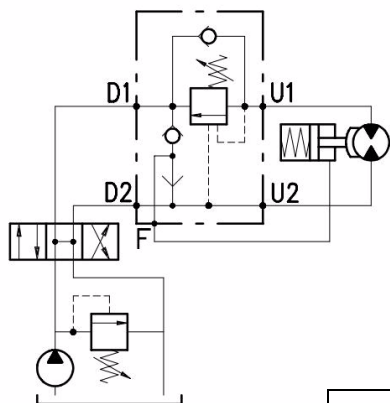
SINGLE COUNTER-BALANCE VALVES + BRAKE SHUTTLE

VOSL/A Series

Aluminium Body - Steel bodied units available on request - add suffix AC

This valve controls a moving load preventing it from moving ahead of the pump and locks the load in any position on U1. It also provides static overload and thermal expansion protection when used in combination with an open centre spool valve. This valve permits free flow from D1 to U1 and blocks the flow from U1 to D1 until a pilot pressure generated at D2/U2 is sufficient to pilot the U1 port open.

This range of Counter-Balance valves includes a shuttle valve to pilot a parking brake.



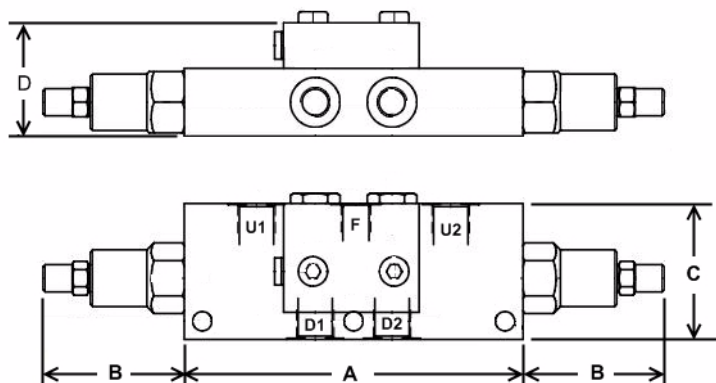
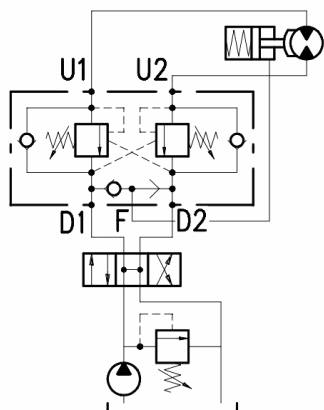
Spring Range Options	
Code	bar
TS	5-210
TR	50-350

Part No. (with TR spring option)	Ports BSPP	Pilot Ratio	M.W.P. BAR	Dim. (mm)				Nom Flow L/min
				A	B	C	D	
VOSL/A-38/TR.S.P4	3/8"	4 : 1	210	105	65	52	50	35
VOSL/A-12/TR.S.P7	1/2"	7 : 1		112	70	57	55	70
VOSL/A-34/TR.S.P7	3/4"	7 : 1		140	90	66	60	100
VOSL/A-100/TR.S.P7	1"	7 : 1		174	100	66	80	180

DOUBLE COUNTER-BALANCE VALVES + BRAKE SHUTTLE

VODL/SC/A Series

Aluminium body - Steel bodied units available on request - add suffix AC



Spring Range Options	
Code	bar
TS	5-210
TR	50-350

Part No. (with TR spring option)	Ports BSPP	Pilot Ratio	M.W.P. BAR	Dim. (mm)				Nom Flow L/min
				A	B	C	D	
VODL/SC/A-38/TR.S.P4	3/8"	4 : 1	210	150	62.5	60	50	40
VODL/SC/A-12/TR.S.P7	1/2"	7 : 1		156	63.5	70	55	75
VODL/SC/A-34/TR.S.P7	3/4"	7 : 1		186	63.5	90	59	120
VODL/SC/A-100/TR.S.P7	1"	7 : 1		232	63.5	100	79	180