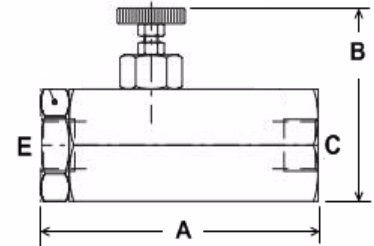
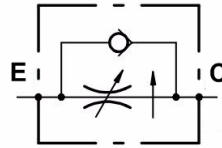


LINE MOUNT VALVES

FLOW REGULATOR

Pressure compensated 2 port inline with reverse free flow check valve

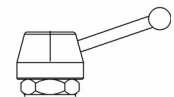
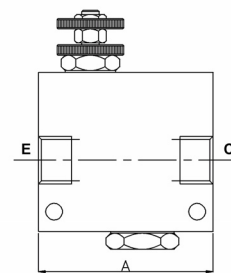
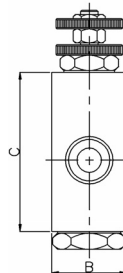
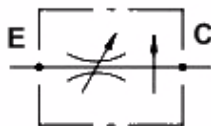
Aluminium body



Part No.	E,R,C Ports BSPP	Max. Pressure BAR	Dim. (mm)		Nominal Flow Port E
			A	B	
VPR/2/RL/EX-14/V	1/4"	210	83	62.5	12
VPR/2/RL/EX-38/V	3/8"		98	66	32
VPR/2/RL/EX-12/V	1/2"		123	88	45

FLOW REGULATOR

Pressure compensated 2 port inline
Aluminium body - Steel bodied units available on request - add suffix AC

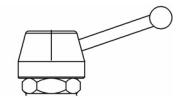
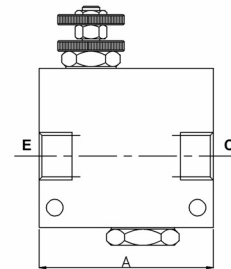
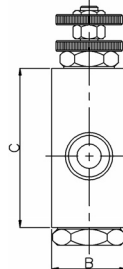
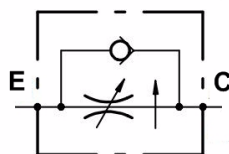


180° Lever Control Option

Part No. (Aluminium Body)	Ports BSPP	M.W.P. BAR Alum	M.W.P. BAR Steel	Dim. (mm)			Nominal Flow Port E
				A	B	C	
VPR/2/U-38/V(L)	3/8"	210	350	80	40	96	20
VPR/2/U-12/V(L)	1/2"			80	40	96	32
VPR/2/U-34/V(L)	3/4"			100	50	110.5	75
VPR/2/U-100/V(L)	1"			100	50	110.5	90

FLOW REGULATOR

Pressure compensated 2 port inline with reverse free flow check valve
Aluminium body - Steel bodied units available on request - add suffix AC



180° Lever Control Option

Part No. (Aluminium Body)	Ports BSPP	M.W.P. BAR Alum	M.W.P. BAR Steel	Dim. (mm)			Nominal Flow Port E
				A	B	C	
VPR/2/RL-38/V(L)	3/8"	210	350	95	40	97	20
VPR/2/RL-12/V(L)	1/2"			95	40	97	32
VPR/2/RL-34/V(L)	3/4"			130	50	110.5	75
VPR/2/RL-100/V(L)	1"			160	70	153.5	90