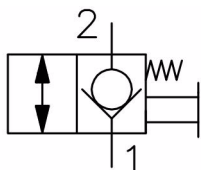
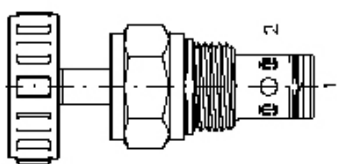
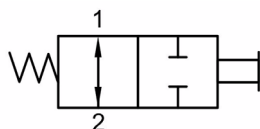
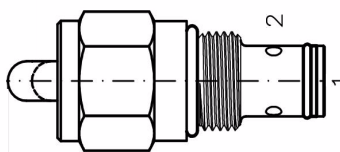


## MANUAL DIRECTIONAL CONTROL VALVES

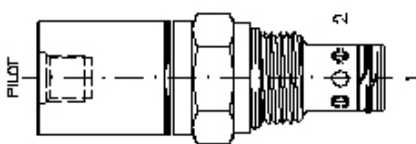


Manual Pull to Open		
Part No.	Flow (L/min)	Cavity
MRPV-10-N-K-0	68	1020



Manual Push to Close		
Part No.	Flow (L/min)	Cavity
MPTC-10-N-0	22	1020

## AIR/OIL PILOT DIRECTIONAL SPOOL VALVES

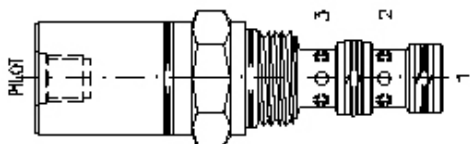


PILOT OPERATING PRESSURE RANGE:

FOR AIR = 3.4 TO 17.2 BAR

FOR OIL = 3.4 TO 207 BAR

Circuit	Air/Oil Pilot Directional Spool Valve		
	Part No.	Flow (L/min)	Cavity
	AODV-10-N-C1-0-4T	30	1020
	AODV-12-N-C1-0-4T	60	1220
	AODV-10-N-O1-0-4T	30	1020
	AODV-12-N-O1-0-4T	60	1220
	AODV-10-N-C3-0-4T	30	1020
	AODV-12-N-C3-0-4T	60	1220



PILOT OPERATING PRESSURE RANGE:

FOR AIR = 3.4 TO 17.2 BAR

FOR OIL = 3.4 TO 207 BAR

Circuit	Air/Oil Pilot Directional Spool Valve		
	Part No.	Flow (L/min)	Cavity
	AODV-10-N-3A-0-4T	30	1030
	AODV-12-N-3A-0-4T	68	1230
	AODV-10-N-3B-0-4T	30	1030
	AODV-12-N-3B-0-4T	68	1230
	AODV-10-N-3C-0-4T	30	1030
	AODV-12-N-3C-0-4T	68	1230
	AODV-10-N-3D-0-4T	30	1030
	AODV-12-N-3D-0-4T	68	1230

For line mount bodies to suit the above cartridges refer to section "J". Use the cavity size to select the correct body type then choose the desired port size.