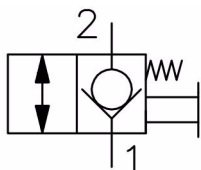
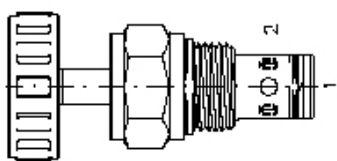
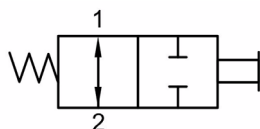
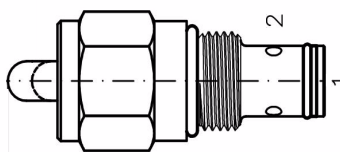


MANUAL DIRECTIONAL CONTROL VALVES

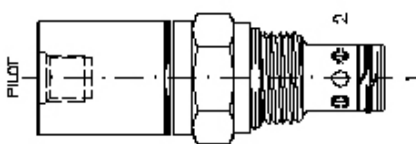


Manual Pull to Open		
Part No.	Flow (L/min)	Cavity
MRPV-10-N-K-0	68	1020



Manual Push to Close		
Part No.	Flow (L/min)	Cavity
MPTC-10-N-0	22	1020

AIR/OIL PILOT DIRECTIONAL SPOOL VALVES

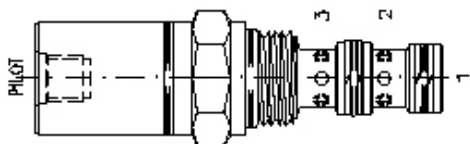


PILOT OPERATING PRESSURE RANGE:

FOR AIR = 3.4 TO 17.2 BAR

FOR OIL = 3.4 TO 207 BAR

Circuit	Air/Oil Pilot Directional Spool Valve		
	Part No.	Flow (L/min)	Cavity
	AODV-10-N-C1-0-4T	30	1020
	AODV-12-N-C1-0-4T	60	1220
	AODV-10-N-O1-0-4T	30	1020
	AODV-12-N-O1-0-4T	60	1220
	AODV-10-N-C3-0-4T	30	1020
	AODV-12-N-C3-0-4T	60	1220



PILOT OPERATING PRESSURE RANGE:

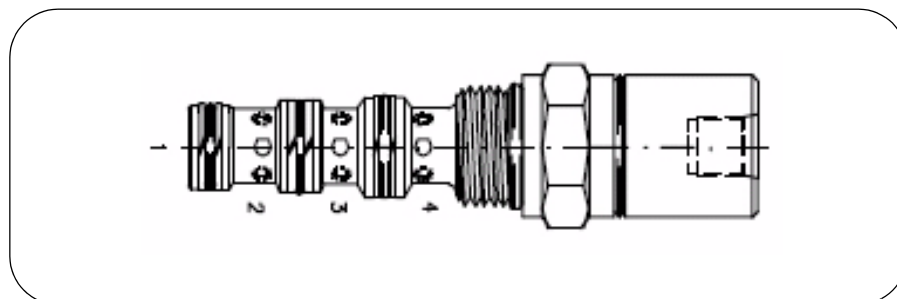
FOR AIR = 3.4 TO 17.2 BAR

FOR OIL = 3.4 TO 207 BAR

Circuit	Air/Oil Pilot Directional Spool Valve		
	Part No.	Flow (L/min)	Cavity
	AODV-10-N-3A-0-4T	30	1030
	AODV-12-N-3A-0-4T	68	1230
	AODV-10-N-3B-0-4T	30	1030
	AODV-12-N-3B-0-4T	68	1230
	AODV-10-N-3C-0-4T	30	1030
	AODV-12-N-3C-0-4T	68	1230
	AODV-10-N-3D-0-4T	30	1030
	AODV-12-N-3D-0-4T	68	1230

For line mount bodies to suit the above cartridges refer to section "J". Use the cavity size to select the correct body type then choose the desired port size.

AIR/OIL PILOT DIRECTIONAL CONTROL VALVE

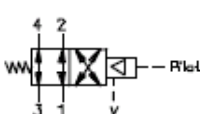
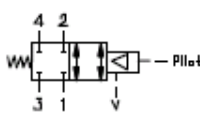
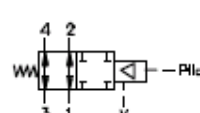
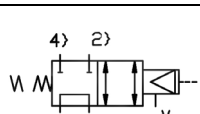


AODV

PILOT OPERATING PRESSURE RANGE:

FOR AIR = 3.4 TO 17.2 BAR

FOR OIL = 3.4 TO 207 BAR

Circuit	Air Pilot - Directional Control Valves		
	Part No.	Nom. Flow (L/min)	Cavity
	AODV-10-N-4A-0-4T	30	1040
	AODV-12-N-4A-0-4T	68	1240
	AODV-10-N-4B-0-4T	30	1040
	AODV-12-N-4B-0-4T	68	1240
	AODV-10-N-4C-0-4T	30	1040
	AODV-12-N-4C-0-4T	68	1240
	AODV-10-N-4D-0-4T	30	1040
	AODV-12-N-4D-0-4T	68	1240

For line mount bodies to suit the above cartridges refer to section "J". Use the cavity size to select the correct body type then choose the desired port size.