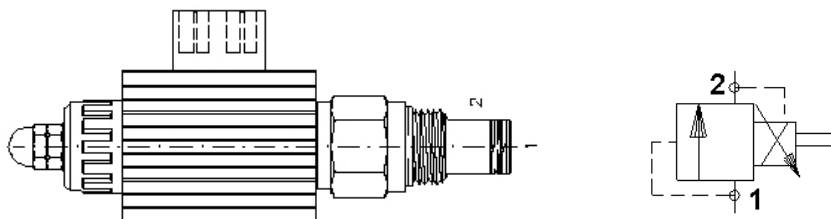


PROPORTIONAL PILOT PRESSURE RELIEF VALVE

ERVD



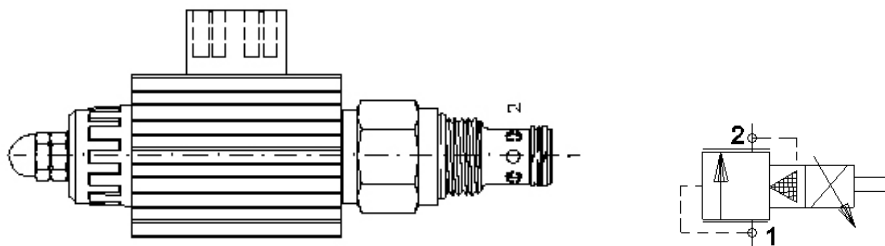
Direct acting, low flow, poppet type - Commonly used as a control pilot relief valve to pilot a larger relief valve. In the event of power failure pressure at port 1 is 0 BAR

Part No.	Flow (L/min)	Cavity
ERVD-10-N-30-0-M-XXDG	3.8	1020

AVAILABLE IN 12V DC OR 24V DC - REPLACE 'XX' IN THE PART NUMBER WITH THE REQUIRED VOLTAGE.

PROPORTIONAL PRESSURE RELIEF VALVE

ERVVP



Pilot operated, sliding spool type

Part No.	Flow (L/min)	Press Range (Bar)	Cavity
ERVVP-10-N-15-0-M-XXDG	95	3.5 - 103	1020
ERVVP-10-N-30-0-M-XXDG	95	3.5 - 206	1020
ERVVP-10-N-50-0-M-XXDG	95	3.5 - 345	1020
ERVVP-12-N-15-0-M-XXDG	230	3.5 - 103	1220
ERVVP-12-N-30-0-M-XXDG	230	3.5 - 206	1220
ERVVP-12-N-50-0-M-XXDG	230	3.5 - 345	1220

AVAILABLE IN 12V DC OR 24V DC - REPLACE 'XX' IN THE PART NUMBER WITH THE REQUIRED VOLTAGE.

For line mount bodies to suit the above cartridges refer to section "J". Use the cavity size to select the correct body type then choose the desired port size.