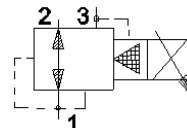
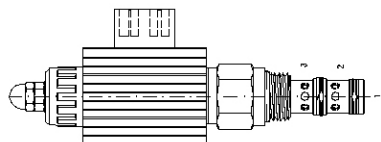


PROPORTIONAL PRESSURE REDUCING/RELIEVING

EPRS



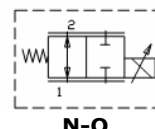
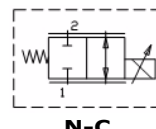
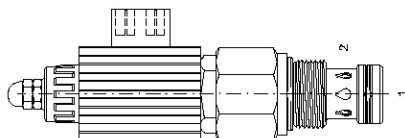
Part No.	Flow (L/min)	Press. Range (Bar)	Cavity
EPRS-08-N-05-0-M-XXDG	23	3.5 - 35	0830
EPRS-08-N-15-0-M-XXDG	23	3.5 - 103	0830
EPRS-08-N-30-0-M-XXDG	23	3.5 - 206	0830
EPRS-08-N-50-0-M-XXDG	23	3.5 - 345	0830
EPRS-10-N-15-0-M-XXDG	46	3.5 - 103	1030
EPRS-10-N-30-0-M-XXDG	46	3.5 - 206	1030
EPRS-10-N-50-0-M-XXDG	46	3.5 - 345	1030
EPRS-12-N-15-0-M-XXDG	91	3.5 - 103	1230
EPRS-12-N-30-0-M-XXDG	91	3.5 - 206	1230
EPRS-12-N-50-0-M-XXDG	91	3.5 - 345	1230

AVAILABLE IN 12V DC OR 24V DC - REPLACE 'XX' IN THE PART NUMBER WITH THE REQUIRED VOLTAGE. IN THE EVENT OF POWER FAILURE, VALVE WILL REDUCE REGULATED PRESSURE AT PORT 1 TO 3.5 BAR (50 PSI)

PROPORTIONAL FLOW CONTROL

2 Port Non-compensated

PFCV



Part No.	Flow (L/min)	Cavity
PFCV-08-N-C-03-0MXXDG	9.5	0820
PFCV-08-N-C-04-0MXXDG	14	0820
PFCV-08-N-C-05-0MXXDG	19	0820
PFCV-10-N-C-04-0MXXDG	15	1020
PFCV-10-N-C-08-0MXXDG	30	1020
PFCV-10-N-C-12-0MXXDG	45	1020
PFCV-10-N-C-16-0MXXDG	60	1020
PFCV-12-N-C-06-0MXXDG	22	1220
PFCV-12-N-C-12-0MXXDG	45	1220
PFCV-12-N-C-18-0MXXDG	68	1220
PFCV-12-N-C-24-0MXXDG	91	1220
PFCV-16-N-C-06-0MXXDG	22	1620
PFCV-16-N-C-12-0MXXDG	45	1620
PFCV-16-N-C-18-0MXXDG	68	1620
PFCV-16-N-C-24-0MXXDG	91	1620
PFCV-16-N-C-30-0MXXDG	114	1620
PFCV-16-N-C-36-0MXXDG	136	1620

NB: THE ABOVE OPTIONS ARE NORMALLY CLOSED. IN THE EVENT OF A POWER FAILURE THE VALVE WILL CLOSE. TO CHOOSE NORMALLY OPEN, REPLACE 'C' IN THE PART NUMBER WITH 'O'. IN THE EVENT OF A POWER FAILURE THE 'O' OPTION WILL DEFAULT TO FULLY OPEN.

For line mount bodies to suit the above cartridges refer to section "J". Use the cavity size to select the correct body type then choose the desired port size.