

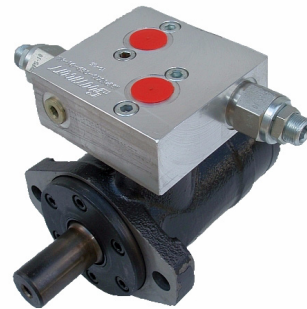
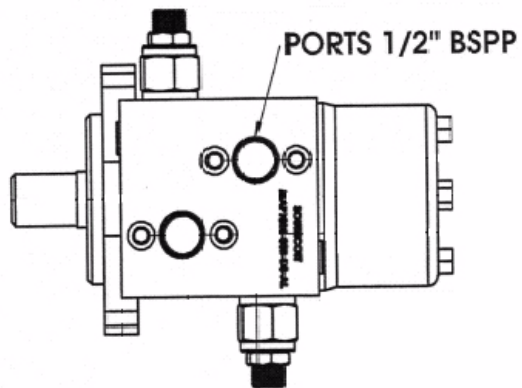
## MOTOR MOUNT BODIES

Suit MAXMA MAP & MAR Series and Danfoss OMP & OMR Series motors

**Applications:**

Cross port relief valve - use Command Controls **RVPS** cartridge

Counter-balance valve - use Command Controls **CBPA** cartridge



Part No.	Cavity	Application	Cartridge	Material
<b>MAP1020-08B-S1-AL</b>	1020	SINGLE RELIEF	1 x RVPS	Aluminium
<b>MAP1020-08B-D1-AL</b>	1020	DOUBLE RELIEF	2 x RVPS	Aluminium
<b>MAP1025-08B-S1-AL</b>	1025	SINGLE C/BALANCE	1 x CBPA	Aluminium
<b>MAP1025-08B-D1-AL</b>	1025	DOUBLE C/BALANCE	2 x CBPA	Aluminium

**NB:** Pricing includes body only