

DC Power Units

Hydro-Tek Hydraulic Power Units are a compact, lightweight DC Power Unit.

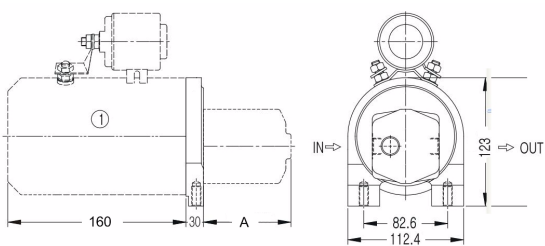
The modular design of the central manifold offers high flexibility from simple through to more complex circuits.

This system permits customised configurations within a short delivery time.

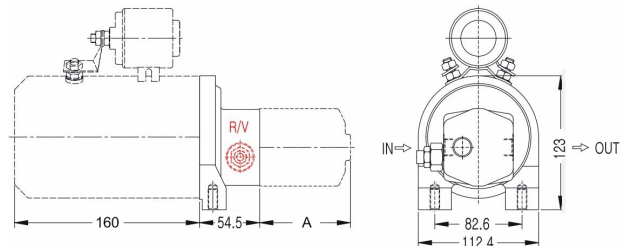
Below is the data on our standard stock range. We have many options however, so for your special application please contact one of our sales personnel.



Part No. 12VDC Units	Description (Below Units c/w 5 Litre Tank & Horizontal Mount)	Tank Size
H12-16-16-A1	Motor & Pump only (no tank)	none
H12-16-16-A2	Motor & Pump + Load Check & Relief Valve (no tank)	none
H12-16-16-B1-H-5S	Motor & Pump & Tank 1/4" BSPP Ports	5Ltr
H12-16-16-C1-H-5S-H2S	Motor & Pump & Tank & S.A. Solenoid + 2 Button Pendant	5Ltr
H12-16-16-D1-H-5S	Motor & Pump & Tank & S. A. Manual Lever	5Ltr
H12-16-16-E1H-H-5SH2D	Motor & Pump & Tank & 1 x D.A. Cetop3 + 2 Button Pendant	5Ltr
H12-16-16-E2H-H-5SH4D	Motor & Pump & Tank & 2 x D. A. Cetop3 + 4 Button Pendant	5Ltr
Part No. 24VDC Units		
H24-22-16-A1	Motor & Pump only (no tank)	none
H24-22-16-A2	Motor & Pump + Load Check & Relief Valve (no tank)	none
H24-22-16-B1-H-5S	Motor & Pump & Tank 1/4" BSPP Ports	5Ltr
H24-22-16-C1-H-5S-H2S	Motor & Pump & Tank & S.A. Solenoid + 2 Button Pendant	5Ltr
H24-22-16-D1-H-5S	Motor & Pump & Tank & S. A. Manual Lever	5Ltr
H24-22-16-E1H-H-5SH2D	Motor & Pump & Tank & 1 x D.A. Cetop3 + 2 Button Pendant	5Ltr
H24-22-16-E2H-H-5SH4D	Motor & Pump & Tank & 2 x D. A. Cetop3 + 4 Button Pendant	5Ltr



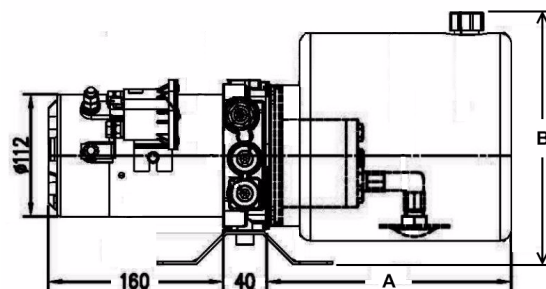
Motor/Pump Unit only - no Tank



Motor/Pump Unit c/w Relief & Check - no Tank

Additions for Tank & Mount Options

Size Litres	Type	Dim A	Dim B	Code
0	No Tank	102 max	-	-
1	Steel	140	191	1S
3	Steel	245	191	3S
5	Steel	224	231	5S
8	Steel	328	231	8S
11	Steel	458	231	11S
5	Plastic	290	224	5P
10	Plastic	530	224	10P
-	Vertical Mt	-	-	V
15	Steel	230	290	15S
20	Steel	530	200	20S
30	Steel	270	380	30S

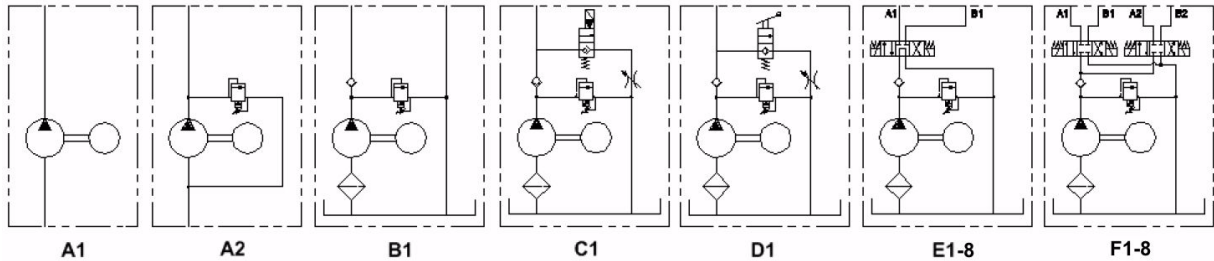


Motor/Pump & Tank Unit

Circuit Options and Model Codes

Below are the standard circuit options available from our stocked range. Other options are available on request. Circuit options A1 & A2 are motor/pump units without tank, options B - E are tank included models. The electric solenoid models are supplied complete with a 3 metre push button pendant control.

CIRCUIT OPTIONS



Model Code

H12 - 16 - 16 - C1 * - H - 5S - H2S

Voltage	Code
12 Volt DC	H12
24Volt DC	H24

DC MOTOR	Duty Cycle	Code
12VDC 1600W	4 min	16
24VDC 2200W	2 min	22
12VDC 2400W	1.8 min	24
24VDC 3000W	5 min	30

PUMP	Code
0.5cc	05
0.7cc	07
1.1cc	11
1.6cc (STD)	16
2.3cc	23
3.2cc	32
4.8cc	48
7.0cc	70
9.8cc	98

ATOS	Code
DHE-0610	A
DHE-0611	B
DHE-0613	C
DHE-0614	D
DHE-0630	E
DHE-0631	F
DHE-0710	G
DHE-0711	H
DHE-0713	I
DHE-0714	J

CIRCUIT OPTION	Code
Motor & Pump only (no tank)	A1
Motor & Pump & Relief Valve (no tank)	A2
Motor & Pump & Tank & 1/4"BSPP Ports	B1
Motor & Pump & Tank & S.A. Solenoid + 2 Button Pendant	C1
Motor & Pump & Tank & S. A. Manual	D1
Motor & Pump & Tank & Cetop3 + 2 Button Pendant	E1-8
Motor & Pump & Tank & Cetop3 + 4 Button Pendant	F1-8
Series Manifold	S2-8

MOUNT	Code
Horizontal	H
Tank Vertical Down	V
Tank Vertical Up	U

TANK	Code
1 ltr steel round	1S
3 ltr steel round	3S
5 ltr steel round	5S
8 ltr steel round	8S
11 ltr steel round	11S
15 ltr steel square	15S
30 ltr steel square	30S
5 Ltr Plastic square	6P
10 ltr Plastic square	10P

Pendant Controls	Code
2 Button S. A.	H2S
2 Button 1 x D.A.	H2D
4 Button 2 x D.A.	H4D
No Pendant	000