

## Gates Nylon Protective Sleeve

### MSHA Flame Resistance Approval

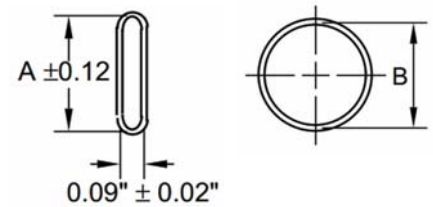
**Description:** Gates nylon sleeves perform a dual role: 1) they provide excellent abrasion resistance to protect individual hose and 2) they can be used to bundle several hose assemblies together for maximum protection. Downtime and maintenance costs are reduced. These nylon sleeves are unique because they offer an extra protective layer against abrasive forces. Specifically, thousands of tiny nylon filaments woven into a texturised yarn “friz” that becomes a self-renewing shield that is extremely resistant to sever abrasion.

**Temperature Range:** Do not use where ambient temperature exceeds 250°F (121°C).



### Product Specifications

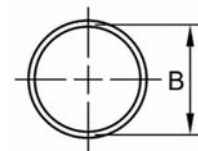
Part Number	Inside Flat A		Sleeve ID B		Colour
	in	mm	in	mm	
HNG-14	1.42	36.1	0.90	22.9	Black
HNG-16	1.67	42.4	1.06	26.9	Black
HNG-20	1.92	48.8	1.22	31.0	Black
HNG-24	2.24	56.9	1.42	36.1	Black
HNG-28	2.85	72.4	1.81	46.0	Black
HNG-32	3.44	87.4	2.19	55.6	Black
HNG-38	3.74	95.0	2.38	60.5	Black
HNG-42	4.12	104.6	2.62	66.5	Black
HNG-46	4.53	115.1	2.88	73.2	Black



## Gates LifeGuard™ Sleaving

### LifeGuard™ Line Of Sight Sleeve

**Description:** Beyond peak performance, the LifeGuard™ system offers you safety. The Line-Of-Sight Sleaving is the first true protection in line of sight hydraulic applications. Contains bursts up to 10,000psi and pinhole leaks up to 5,000psi at 250°F (121°C) for up to five minutes. The double-layer sleeve effectively shields operators against hazards such as personal injury, fluid burns and injection, fires and explosions, electrical shock and mechanical failure.



### Product Specifications

Part Number	Hose Size		Sleeve ID - B		Contains Hose Bursts...	Clamps To Suit	
	Dash	mm	in	mm		Aluminium	Stainless Steel
14LG3K	-4	6.3	0.71	18.0	Pin hole up to 3,000 psi Burst up to 6,000psi	6SC4	6SC4SS
16LG3K	-6	9.5	0.91	23.1		6SC4	6SC4SS
20LG3K	-8	12.5	1.06	26.9		8SC4	8SC4SS
22LG3K	-10	15.9	1.26	32.0		10SC4	10SC4SS
26LG3K	-12	19.1	1.50	38.1		12SC4	12SC4SS
32LG3K	-16	25.4	1.99	50.6		16SC4	16SC4SS
14LG4K	-4	6.3	0.88	22.4	Pin hole up to 4,000psi Burst up to 8,000psi	6SC4	6SC4SS
16LG4K	-6	9.5	1.03	26.1		6SC4	6SC4SS
20LG4K	-8	12.5	1.22	31.0		8SC4	8SC4SS
22LG4K	-10	15.9	1.35	34.3		10SC4	10SC4SS
26LG4K	-12	19.1	1.59	40.4		12SC4	12SC4SS
32LG4K	-16	25.4	1.99	50.6	16SC4	16SC4SS	
14LG5K	-4	6.3	0.88	22.4	Pin hole up to 5,000psi Burst up to 10,000psi	6SC4	6SC4SS
16LG5K	-6	9.5	1.03	26.1		6SC4	6SC4SS
20LG5K	-8	12.5	1.22	31.0		8SC4	8SC4SS
22LG5K	-10	15.9	1.35	34.3		10SC4	10SC4SS
26LG5K	-12	19.1	1.59	40.4		12SC4	12SC4SS