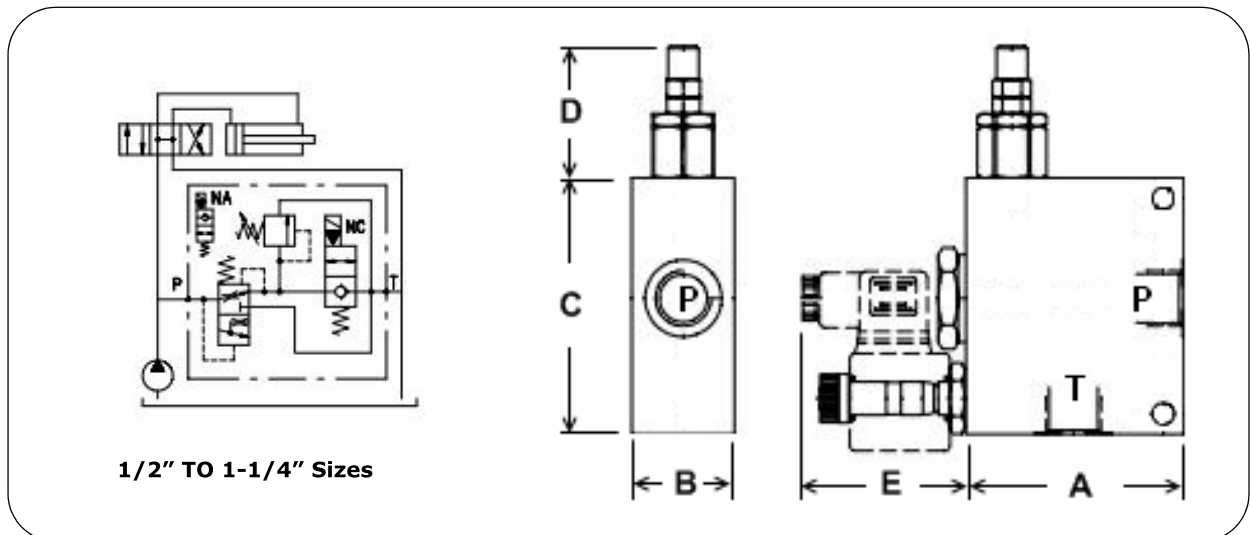
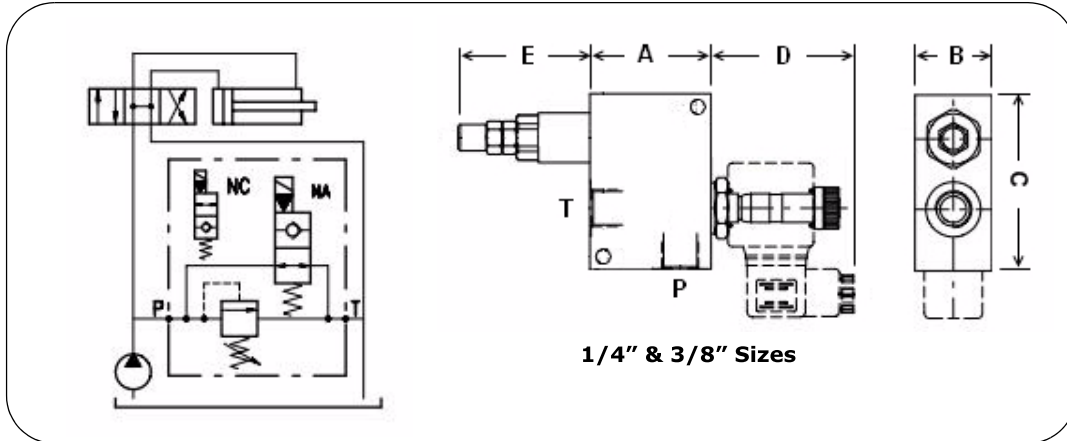


LINE MOUNT VALVES

PRESSURE RELIEF VALVE - SOLENOID UNLOADED

Aluminium Body

NB: Steel bodied units available on request - add suffix AC



Part No. (with TS Spring option)	Ports BSPP	M.W.P. BAR Alum	M.W.P. BAR Steel	Dim. (mm)					Nom Flow l/min
				A	B	C	D	E	
VMP/VE-14/NA/5.TS.S	1/4"	220	N/A	55	35	80	65	60	20
VMP/VE-38/NA/5.TS.S	3/8"		55	35	80	79	60	35	
VMP/VE-12/NA/03.TS.S	1/2"		85	40	100	51.5	63.5	90	
VMP/VE-34/NA/03.TS.S	3/4"		85	40	100	51.5	63.5	90	
VMP/VE-100/NA/03.TS.S	1"		100	50	110	53	65	150	
VMP/VE-114/NA/03.TS.S	1-1/4"		130	70	130	53	65	250	

NB: Coil & connector must be ordered separately.

NB: The above valves are with normally open solenoids (unloaded). Normally closed are available upon request.

NB: Size 1/4" not available in steel.

Spring Range Options	
Code	bar
TB	5-40
TV	20-80
TS	50-220
TR	180-350

Part No.	Description
4SLE001200A	12 Volt Coil
4SLE002400A	24 Volt Coil
SP-KA-DC	Coil Connector