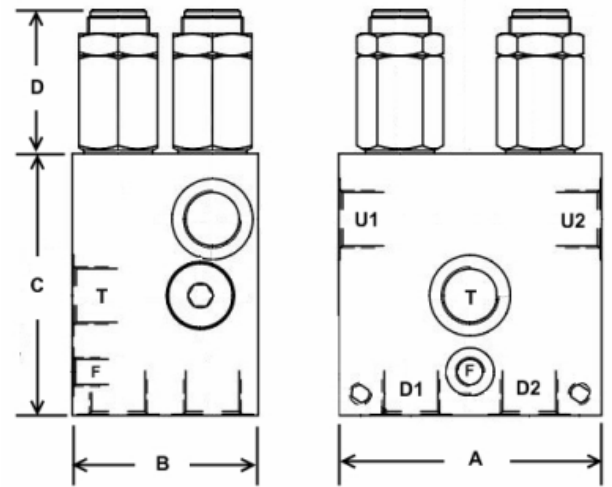
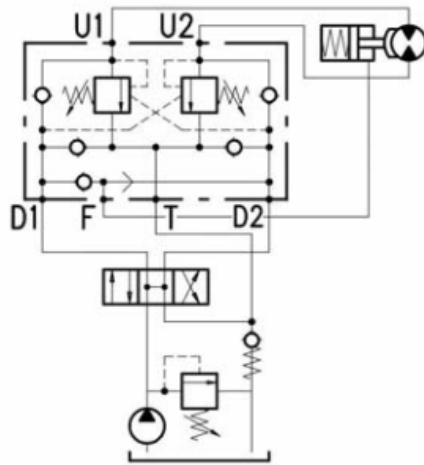


# MOTION CONTROL & ANTI CAVITATION + BRAKE SHUTTLE

Aluminium body - Steel bodied units available on request - add suffix AC

These valves provide double counter-balance, anti-shock, anti-cavitation and a brake shuttle in the one block

Spring Range Options	
Code	bar
TS	5-210
TR	50-350



Part No. (with TR spring option)	Ports BSPP	Standard Pilot Ratio	Optional Pilot Ratios	M.W.P. BAR Alum	M.W.P. BAR Steel	Dim. (mm)				Nom Flow L/min
						A	B	C	D	
VABAL/SF-38/TR.S.P3	3/8"	3:1	4:1	210	350	90	60	100	54.8	35
VABAL/SF-12/TR.S.P3	1/2"	3:1	7:1			100	70	100	50.2	70
VABAL/SF-34/TR.S.P3	3/4"	3:1	7:1			120	85	120	60.0	100
VABAL/SF100/TR.S.P3PG	1"	3:1	7:1			160	110	160	64.7	180