

LINE MOUNT VALVES

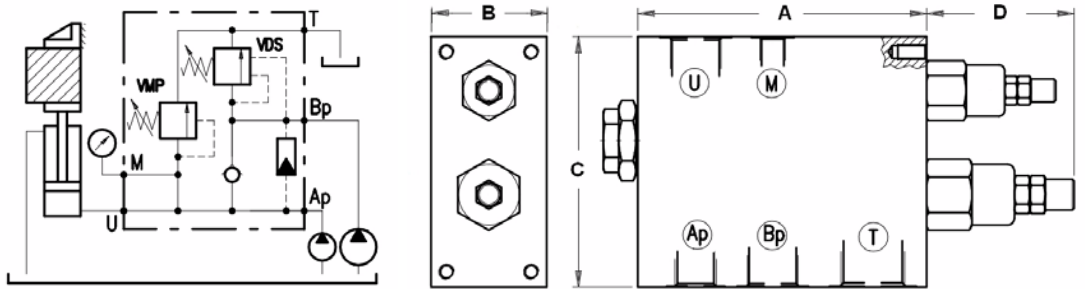
HIGH-LOW UNLOADING VALVES

VEP Series

These valves are utilised in two pump systems to provide a HIGH-LOW (fast-slow) operation. Fast speed is obtained by utilising both pumps to feed the circuit up to the setting of the bypass valve (VDS on port BP). Slow speed is then available to feed the circuit up to the pressure setting of the master relief valve (VMP on port AP)

NB: Port AP uses spring options TS & TR, Port BP uses TB & TV
Aluminium body - Steel bodied units available on request - add suffix AC

| Spring Range Options | |
|----------------------|---------|
| Code | bar |
| TB | 5-40 |
| TV | 20-80 |
| TS | 50-220 |
| TR | 180-350 |



| Part No. (with TS & TV Spring options) | Ports BSPP | M.W.P. BAR Alum | M.W.P. BAR Steel | Dim. (mm) | | | | Nominal Flow L/min | | |
|---|---------------|-----------------------|------------------------|-----------|----|-----|------|--------------------|-----|-----|
| | | | | A | B | C | D | Ap | Bp | U |
| VEP-38/TR-TV.S | 3/8" | 250 | 350 | 98 | 40 | 78 | 60 | 10 | 25 | 30 |
| VEP-12/TR-TV.S | 1/2" | | | 120 | 50 | 88 | 67 | 20 | 45 | 55 |
| VEP-34/TR-TV.S | 3/4" | | | 150 | 60 | 114 | 76.5 | 30 | 80 | 100 |
| VEP-100/TR-TV.S | 1" | | | 180 | 70 | 130 | 88.5 | 50 | 150 | 180 |
| VEP-114/TR-TV.S | 1-1/4" | | | 200 | 80 | 160 | 88.5 | 80 | 200 | 250 |

HIGH-LOW UNLOADING VALVES

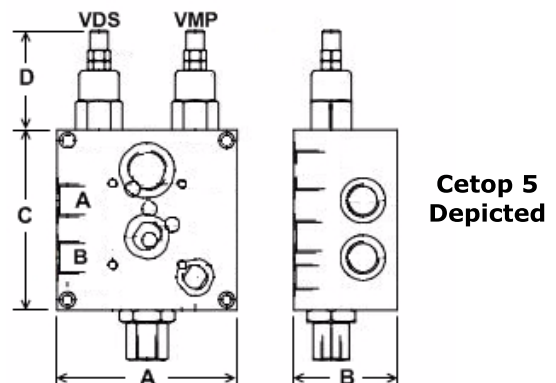
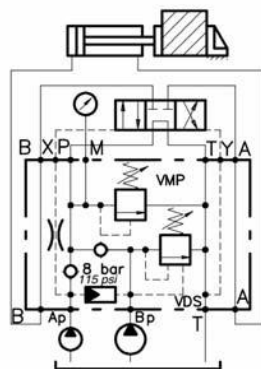
VEP/FL Series

Cetop 3/5/7 solenoid valve mount blocks

Aluminium body - Steel bodied units available on request - add suffix AC

These valves are utilised in two pump systems to provide a HIGH-LOW (fast-slow) operation. Fast speed is obtained by utilising both pumps to feed the circuit up to the setting of the bypass valve (VDS on port BP). Slow speed is then available to feed the circuit up to the pressure setting of the master relief valve (VMP on port AP). They are available as sandwich valves to suit CETOP 3/5/7 solenoid valves to make a compact assembly.

| Spring Range Options | |
|----------------------|---------|
| Code | bar |
| TB | 5-40 |
| TV | 20-80 |
| TS | 50-220 |
| TR | 180-350 |



| Part No. (with TS & TV Spring options) | Ports BSPP | Cetop Mount | M.W.P. BAR Alum | M.W.P. BAR Steel | Dim. (mm) | | | | Nominal Flow L/min | | |
|---|---------------|----------------|-----------------------|------------------------|-----------|----|-----|----|--------------------|----|----|
| | | | | | A | B | C | D | Ap | Bp | P |
| VEP/FL/6-38/TS-TV.S | 3/8" | 3 | 210 | 350 | 100 | 50 | 100 | 60 | 10 | 25 | 30 |
| VEP/FL/10-12/TS-TV.S | 1/2" | 5 | | | 120 | 69 | 120 | 66 | 20 | 45 | 55 |