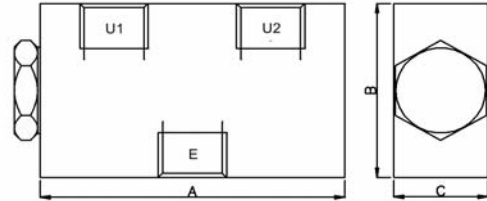


LINE MOUNT VALVES

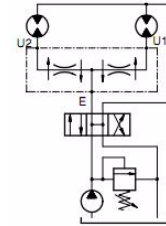
FLOW DIVIDER

VDFR Series

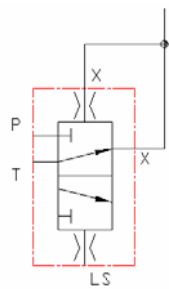
Three port pressure compensated flow divider valve, designed to split the flow 50/50 to two circuits from a single Pump.
 Aluminium body maximum pressure = 210 BAR
 Steel body maximum pressure = 350 BAR (add suffix AC)
 Other split ratios are available on request



Part No.	Ports BSPP		Dimensions(mm)			Flow Range L/min	
	in	out	A	B	C	min	max
VDFR-38/12(/AC)	3/8"	3/8"	100	60	40	4	12
VDFR-38/24(/AC)	3/8"	3/8"	100	60	40	12	24
VDFR-12/40(/AC)	1/2"	3/8"	100	60	40	24	40
VDFR-34/90(/AC)	3/4"	1/2"	140	80	50	40	90
VDFR-100/150(/AC)	1"	3/4"	140	80	50	90	150
VDFR-114/250/AC	1 1/4"	1"	140	100	60	200	250



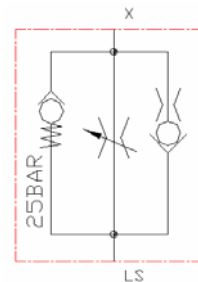
LOAD SENSE SIGNAL CONDITIONERS



LOAD SENSE SIGNAL AMPLIFIER

Part No.: 634503000

This load sense signal amplifier is used in those applications where the load sense signal must travel over a long distance. The signal amplifier uses the pump flow to direct the load sense signal back to the pump. When using this device we recommend you also use the signal stabiliser.



LOAD SENSE SIGNAL STABILISER

Part No.: 634503001

The load sense signal stabiliser is used to stabilise a load sense signal which may be reacting with the pump to create a surging situation in the system.

Part No.	PORT	Max. Press.	DESCRIPTION
634503000	1/8" BSPP	315 BAR	SIGNAL AMPLIFIER
634503001	1/4" BSPP		SIGNAL STABILISER

Typical Circuit

