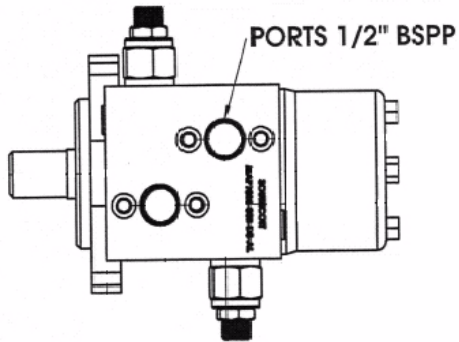


## MOTOR MOUNT BODIES

Suit MAXMA MAP & MAR Series and Danfoss OMP & OMR Series motors

### Applications:

Cross port relief valve - use Command Controls **RVPS** cartridge  
Counter-balance valve - use Command Controls **CBPA** cartridge



Part No.	Cavity	Application	Cartridge	Material
<b>MAP1020-08B-S1-AL</b>	1020	SINGLE RELIEF	1 x RVPS	Aluminium
<b>MAP1020-08B-D1-AL</b>	1020	DOUBLE RELIEF	2 x RVPS	Aluminium
<b>MAP1025-08B-S1-AL</b>	1025	SINGLE C/BALANCE	1 x CBPA	Aluminium
<b>MAP1025-08B-D1-AL</b>	1025	DOUBLE C/BALANCE	2 x CBPA	Aluminium

**NB:** Pricing includes body only

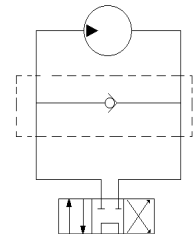
## CROSS PORT CHECK VALVES

These valves are ideally suited for unidirectional motor applications when using a control valve that has closed work ports in the neutral position. The cross port check valve permits the centrifugal energy of the driven component to dissipate harmlessly.

The port centres permit direct fitment via adaptors to **Torqmotor®** motors or they can be line mounted to suit any motor application.

The direction of the check valve can be changed by swapping the end plugs.

Applications include rotary hoes, rotary brooms, post hole diggers, etc.



Part No.	Direct mounts via adaptors to:	Port Size
<b>SBPC-141-UN</b>	Ross MB/ME & MG/MF Charlynn H & S series Maxma MAPH & MARS	7/8"UNO
<b>SBPC-141-UN-2K</b>	Charlynn 2000 Series Maxma MASE	7/8"UNO