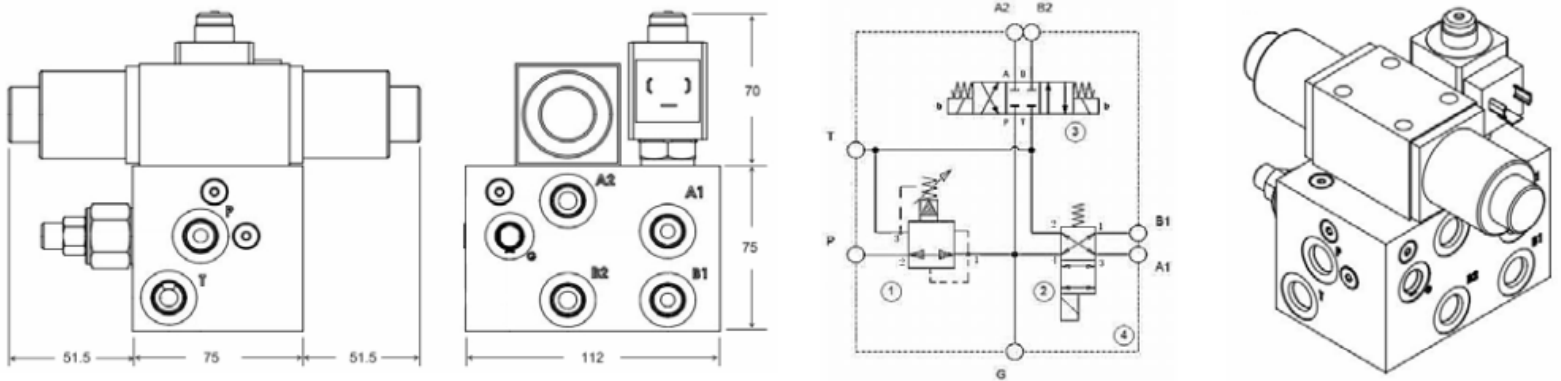


PTQH-0711 Series

This **Quick Hitch Valve** has a pressure reducing valve on the input line to control the output pressure. It is also equipped with a two position solenoid valve to operate the bucket hitch and a second 3 position solenoid valve to operate a bucket tilt mechanism. All these functions are contained in one neat, compact, easy to mount manifold system.



| Part No. | Port Size | Max. Press. | Description |
|----------------|-----------|-------------|-------------------|
| PTQH-0711-12DC | 9/16"UNO | 350 BAR | Quick Hitch Valve |
| PTQH-0711-24DC | 9/16"UNO | | Quick Hitch Valve |

Coils & connectors included in the above price.