

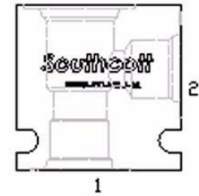
BODIES TO SUIT CARTRIDGE VALVES

NB: Aluminium bodies rated to 210 BAR (3000 PSI)
Steel bodies rated to 345 BAR (5000 PSI)

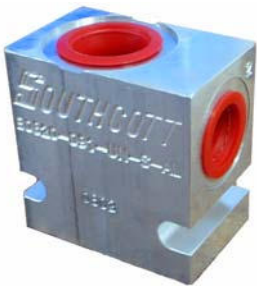
2 PORT



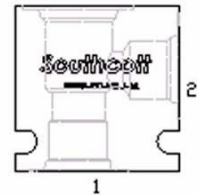
Part No.	Cavity	Ports	Material
B0820-09U-S1-AL	0820	9/16" UNO	Aluminium
B0820-06B-S1-AL	0820	3/8" BSPP	Aluminium
B1020-12U-S1-AL	1020	3/4" UNO	Aluminium
B1020-14U-S1-AL	1020	7/8" UNO	Aluminium
B1020-06B-S1-AL	1020	3/8" BSPP	Aluminium
B1020-08B-S1-AL	1020	1/2" BSPP	Aluminium
B1220-17U-S1-AL	1220	1 1/16" UNO	Aluminium
B1220-12B-S1-AL	1220	3/4" BSPP	Aluminium
B1620-21U-S1-AL	1620	1-5/16" UNO	Aluminium
B1620-16B-S1-AL	1620	1" BSPP	Aluminium
B0820-09U-S1-ST	0820	9/16" UNO	Steel
B1020-12U-S1-ST	1020	3/4" UNO	Steel
B1020-06B-S1-ST	1020	3/8" BSPP	Steel
B1020-08B-S1-ST	1020	1/2" BSPP	Steel
B1220-17U-S1-ST	1220	1-1/16" UNO	Steel
B1220-12B-S1-ST	1220	3/4" BSPP	Steel
B1620-21U-S1-ST	1620	1-5/16" UNO	Steel
B1620-16B-S1-ST	1620	1" BSPP	Steel



2 PORT - A Version



Part No.	Cavity	Ports	Material
B0820A-09U-S1-AL	0820A	3/8" BSPP	Aluminium
B1020A-06B-S1-AL	1020A	1/2" BSPP	Aluminium
B1220A-12U-S1-AL	1220A	3/4" BSPP	Aluminium
B1620A-14U-S1-AL	1620A	1" BSPP	Aluminium



2.5 PORT



Part No.	Cavity	Ports	Material
B0825-09U-S1-AL	0825	9/16" UNO	Aluminium
B0825-06B-S1-AL	0825	3/8" BSPP	Aluminium
B1025-12U-S1-AL	1025	3/4" UNO	Aluminium
B1025-14U-S1-AL	1025	7/8" UNO	Aluminium
B1025-08B-S1-AL	1025	1/2" BSPP	Aluminium
B1225-17U-S1-AL	1225	1-1/16" UNO	Aluminium
B1225-12B-S1-AL	1225	3/4" BSPP	Aluminium
B0825-12U-S1-ST	0825	9/16" UNO	Steel
B1025-14U-S1-ST	1025	7/8" UNO	Steel
B1225-17U-S1-ST	1225	1-1/16" UNO	Steel



3 PORT



Part No.	Cavity	Ports	Material
B0830-09U-S1-AL	0830	9/16" UNO	Aluminium
B1030-12U-S1-AL	1030	3/4" UNO	Aluminium
B1030-14U-S1-AL	1030	7/8" UNO	Aluminium
B1030-06B-S1-AL	1030	3/8" BSPP	Aluminium
B1030-08B-S1-AL	1030	1/2" BSPP	Aluminium
B1230-17U-S1-AL	1230	1 1/16" UNO	Aluminium
B1230-12B-S1-AL	1230	3/4" BSPP	Aluminium
B1630-17U-S1-AL	1630	1-1/16" UNO	Aluminium
B0830-09U-S1-ST	0830	9/16" UNO	Steel
B1030-12U-S1-ST	1030	3/4" UNO	Steel
B1230-17U-S1-ST	1230	1-1/16" UNO	Steel
B1630-21U-S1-ST	1630	1-5/16" UNO	Steel

