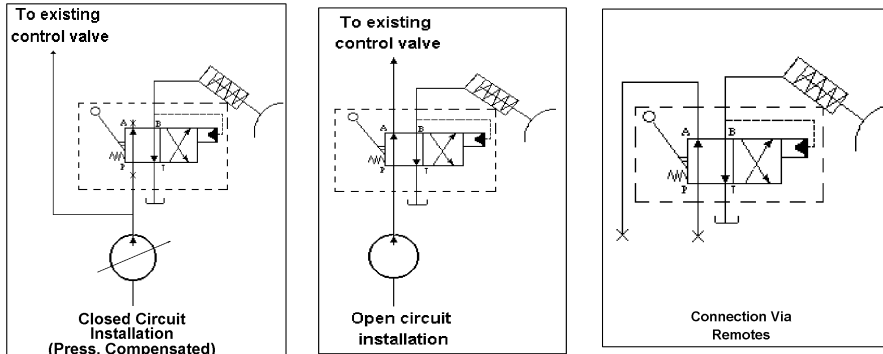


# CANE TRAILER BRAKE VALVE

The Southcott-Walvoil cane trailer brake valve is designed to meet the requirements of the Department of Transport for Cane Trailers.

The valve is inserted into the tractor hydraulic circuit as per the circuit options below.

NB: The brake is connected directly to tank when the valve is in neutral thus eliminating the signal entirely leaving no back pressure on the brake.

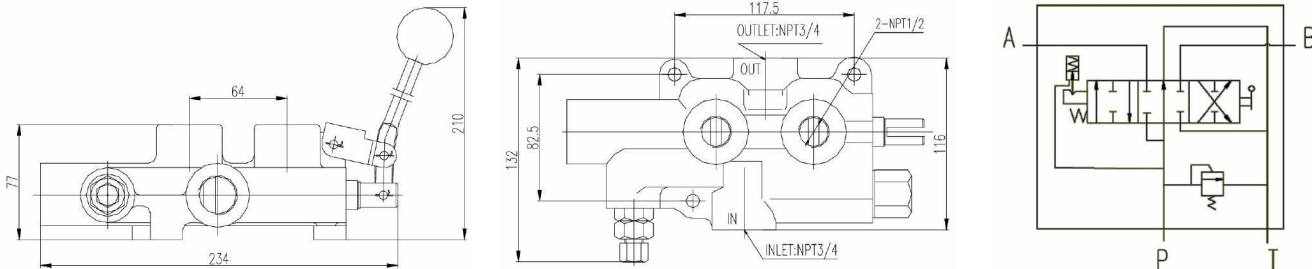
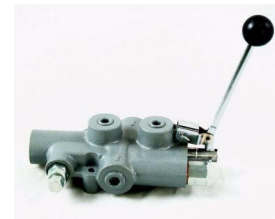


NB: 1/ Tank port must have separate connection to tank. 2/ The lever pivot box can be positioned at 90 degrees or 180 degrees as required.

Part No.	Circuit	Max. Rec. Flow		Max. Press.		Ports BSSP
		L/min	US gpm	bar	psi	
SD4/1/TBV	Open	45	12	210	3000	1/2"
SD4/1/TBV/CC	Closed					

# LOG SPLITTER VALVE

- Primarily used for log splitters
- Spring centre to neutral in one direction
- Pressure release detent in the other direction (when cylinder completes its return stroke)
- Ports: P&T - 3/4" NPT; A&B - 1/2" NPT



Part No.	No. Of Spools	Nom. Flow L/min	Detent Release Pressure		Working Pressure		Ports NPT	
			bar	psi	bar	psi	P&T	A&B
LS-TW-20F	1	95	70 - 140	1015 - 2030	207	3000	3/4"	1/2"