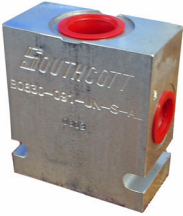


BODIES TO SUIT CARTRIDGE VALVES

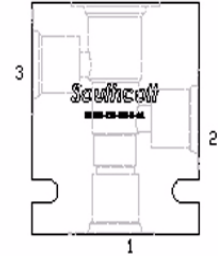
NB: Aluminium bodies rated to 210 bar (3000 psi)
Steel bodies rated to 345 bar (5000 psi)



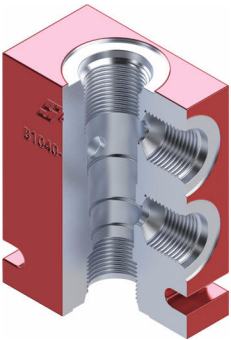
3 PORT - T-11A Version



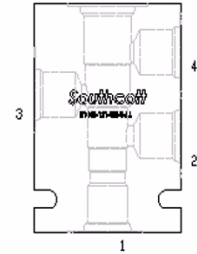
Part Number	Cavity	Ports	Material
BT11A-08B-S1-AL	T-11A	1/2" BSPP / 1/4" BSPP	Aluminium
BT11A-14U09U-AL		7/8" UNO / 9/16" UNO	
BT11A-14U09U-ST		7/8" UNO / 9/16" UNO	Steel



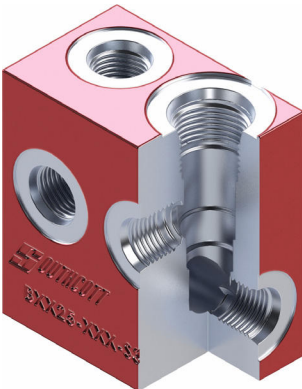
4 PORT



Part Number	Cavity	Ports	Material
B0840-09U-S1-AL	0840	9/16" UNO	Aluminium
B1040-12U-S1-AL	1040	3/4" UNO	
B1040-14U-S1-AL		7/8" UNO	
B1040-06B-S1-AL		3/8" BSPP	
B1240-17U-S1-AL	1240	1-1/16" UNO	
B1240-12B-S1-AL		3/4" BSPP	
B0840-09U-S1-ST	0840	9/16" UNO	Steel
B1040-12U-S1-ST	1040	3/4" UNO	
B1240-17U-S1-ST	1240	1-1/16" UNO	



CYLINDER MOUNT



Part Number	Cavity	Type	Ports	Port Adp.	Material
B0825-09U-S3-AL	0825	Single	9/16" UNO	ZC52-0909	Aluminium
B0825-09U-D3-AL		Double			AL/Reverse
B0825-09U-D31-AL	1025	Single	3/4" UNO	ZC52-1212	Aluminium
B1025-12U-S3-AL		Double			AL/Reverse
B1025-12U-D3-AL	T-11A	Single	3/4" UNO	ZC52-1212	Aluminium
B1025-12U-D31-AL		Double			
BT11A-12U-S3-AL	1225	Single	1-1/16" UNO	ZC52-1717	Aluminium
BT11A-12U-D3-AL		Double			
B1225-17U-S3-AL	0825	Single	9/16" UNO	ZC52-0909	Steel
B1225-17U-D3-AL		Double			
B0825-09U-S3-ST	1025	Single	3/4" UNO	ZC52-1212	
B0825-09U-D3-ST		Double			
B1025-12U-S3-ST	1225	Single	1-1/16" UNO	ZC52-1717	
B1025-12U-D3-ST		Double			
B1225-17U-S3-ST	1225	Single	1-1/16" UNO	ZC52-1717	
B1225-17U-D3-ST		Double			

NB: The above bodies are suitable as single or double counter-balance valves (CBPA) or as pilot operated check valves (POCI) directly attached to a cylinder port (except cavity T-11A suitable only CPBA-20M).
Use special Child port adaptor ZC52-0909, ZC52-1212, ZC52-1412 or ZC52-1717 to attach direct to the cylinder port.



Double counter-balance system displayed.

NB: For single counter-balance, port C2 is the load hold port