

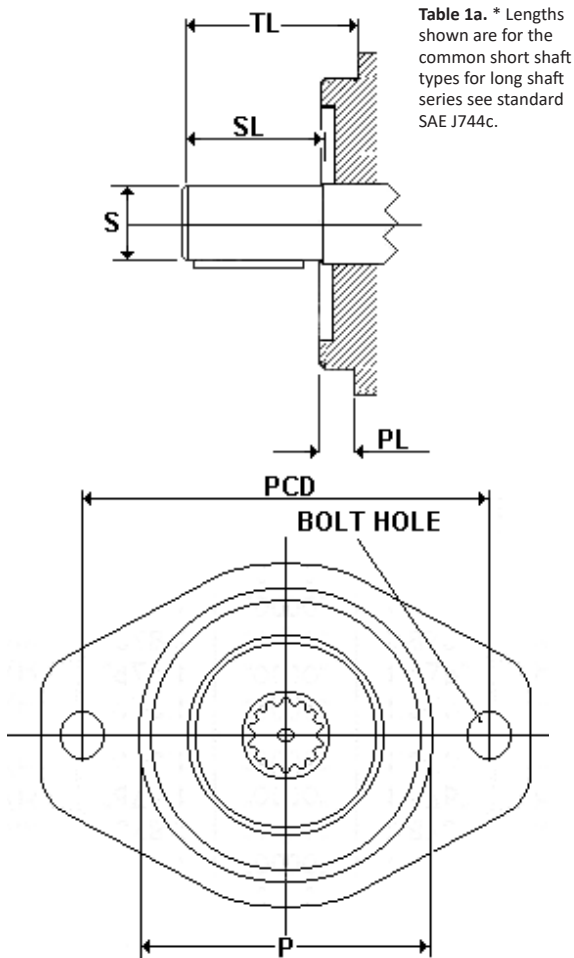


HYDRAULIC PUMP & MOTOR MOUNT FLANGE & SHAFT INDUSTRY STANDARDS

EXTRACTS FROM SAE J74CC ANSI STANDARD FOR FLUID POWER PUMPS AND MOTORS

STRAIGHT SHAFT TYPES

SAE Code	"S"	"SL"	"TL"	Key Width
AA	1/2"	0.750	1.062	0.125
A	5/8"	0.937	1.250	0.156
B	7/8"	1.3142	1.625	0.250
BB	1"	1.500	1.812	0.250
C	1.1/4"	1.875	2.187	0.312
CC	1.1/2"	2.125	2.437	0.375
D	1.3/4"	2.625	2.937	0.437

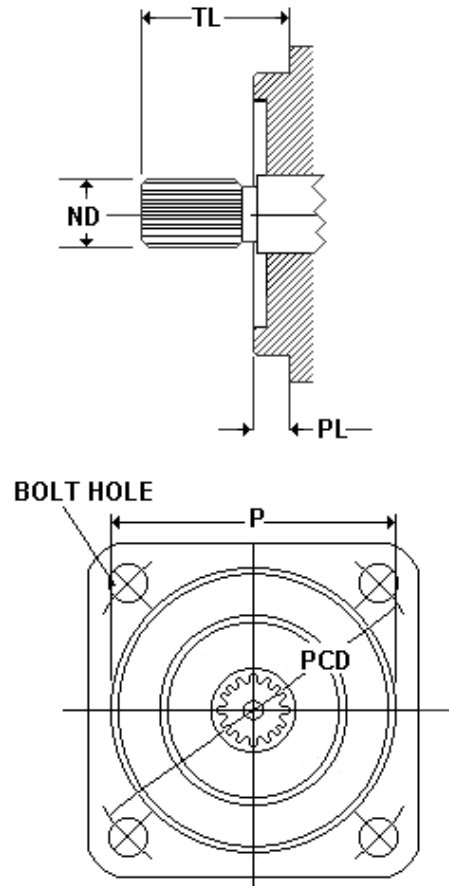


TWO BOLT MOUNTING FLANGE

SAE CODE	PILOT DIA	BOLT PCD	BOLT HOLE	PILOT LENGTH
AA	2.00"	3.250"	0.406"	0.250"
A	3.25"	4.187"	0.437"	0.250"
B	4.00"	5.750"	0.562"	0.375"
C	5.00"	7.125"	0.687"	0.500"
D	6.00"	9.000"	0.812"	0.500"
E	6.50"	12.500"	1.062"	0.625"
F	7.00"	13.781"	1.062"	0.625"

30 DEG INVOLUTE SPLINE TYPES

SAE Code	Spline Details	Nom Diameter	"TL"
AA	9T 20/40DP	1/2"	1.062
A	9T 16/32DP	5/8"	1.250
AH	11T 16/32DP	3/4"	1.250
B	13T 16/32DP	7/8"	1.625
BB	15T 16/32DP	1"	1.812
C	14T 12/24DP	1 1/4"	2.187
CC	17T 12/24DP	1 1/2"	2.437
D	13T 8/16DP	1 3/4"	2.937
E	13T 8/16DP	1 3/4"	2.937
F	15T 8/16DP	2"	3.437



FOUR BOLT MOUNTING FLANGE

SAE Code	PILOT DIA	BOLT PCD	BOLT HOLE	PILOT LENGTH
B	4.00"	5.000"	0.562"	0.375"
C	5.00"	6.375"	0.562"	0.500"
D	6.00"	9.000"	0.812"	0.500"
E	6.50"	12.500"	0.812"	0.625"
F	7.00"	13.781"	1.062"	0.625"